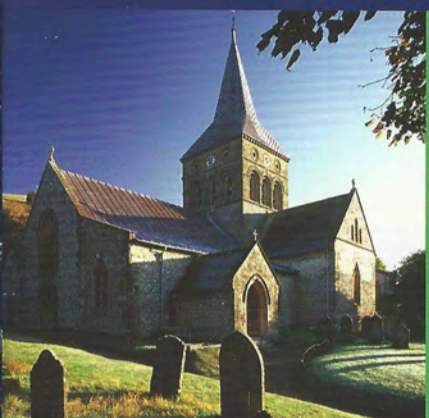


East Meon Flower Festival

22nd-25th June 2012



A Guide to the
Displays and Events



The responsibility of maintaining this splendid Grade 1 listed building lies entirely with the local church and village community. In particular, recent damage to the roof, both from natural causes and criminal activity, has meant that it will become necessary to replace the main roof sometime in the future. A Church Roof Fund has been established for that purpose and surplus income from this Festival will go into that Fund.

Many thanks to the local businesses and individuals who have so kindly sponsored this Flower Festival and, in doing so, are helping us maintain this important building for posterity.

“All Saints Church has been at the centre of the East Meon village community since it was built eight hundred and fifty years ago. For centuries, church buildings have been not only places of prayer and worship, but also sponsors of the arts, market-places, the venue for civic and public gatherings, and much else besides.

Following this ancient tradition, the parish church is proud to host and to promote this Flower Festival, in which local people and church and community groups, including the children of East Meon Church of England Primary School, demonstrate the abilities, gifts and talents with which they have been blessed, in a wide variety of artistic forms. The Festival is evidence of the strength of community life in this small village of 1200 people.

The organisation of the Festival has been a true community effort, and I pay tribute to all those involved, and especially to the organising committee. The Festival, which links past, present and future, is a living example of the importance of co-operation between community and church, and a sign of our belief that the world remains the theatre of God’s glory.

On behalf of the congregation and village community, I welcome you to this Festival and hope that your visit is richly blessed.”

Terry Louden
Vicar of East Meon and Langrish
Canon of Portsmouth and Cape Coast (Ghana)



Flower displays

Every corner of the 12th century All Saints Church has been filled with flower displays on the theme 'A Portrait of East Meon' and is a showcase of the village community and all its constituent parts.

The church has around 17 flower arrangers, some enthusiastic amateurs and others professionally trained. The team decorates the church throughout the year, the highlights being Easter, Harvest Festival and Christmas with decorations being themed to the occasion.

Members of this team have worked alongside the various village groups and organisations to come up with designs for their displays, which represent their individual interest and activities, and to help carry them out.

Having decided on the flowers and greenery they wanted to work with, they then set about growing suitable flowers from seeds, collecting greenery from the local woods just prior to the event and working with a local greenwood craftsman in the creation of willow and hazel supporting structures for the flowers.

Other flowers were sourced from a local wholesaler, Nursery Fresh, based in Horndean. This company has a wealth of experience in supplying flower festivals, including those held at Chichester, Guildford and Salisbury cathedrals as well as the NAFAS 50th Anniversary celebrations held in Westminster Abbey.



Children's art competition

Children from East Meon Primary School and other young painters under 18 who live in the Parish were invited to submit a picture 'What I like most in East Meon'. These paintings were judged by a panel of local artists and the prizes were presented by Lucy Cousins (creator of Maisy Mouse) – one for each class in the Primary School and one for the Open Class. These imaginative works of art are on display in the south transept of the church in the same area as the pre-school and school flower displays.



Art exhibition

Works by five local professional artists, all available to purchase.

Rozanne Wilson

Born in Winchester, Rozanne comes from a family of artists. She paints her flower, landscape and still-life works in oils, acrylics and watercolours. Her speciality is animal portraits in pastel.

Juliet Bonham-Carter

Juliet paints mainly in oil. For many years a pupil of Hatherley School of Art, she specialises in portraiture and also paints flowers and still-life.

Caroline Hawkey

Caroline lives in East Meon and has been painting for 25 years. She paints in watercolour and pastel and specialises in animals including rare breeds and domestic animals. She also paints flowers.

Jean Pike

Jean works in watercolour, oil and charcoal, particularly still-life and landscape. She also paints houses, mainly on commission.

Thalia Saunders

Thalia is a watercolourist who specialises in flowers.

Craft stall

The East Meon Sewing Group was formed when the Millennium Embroidery in the north transept of the church was completed. Those involved in that project had so enjoyed working together they started meeting weekly in the Church Hall and there are now more than 30 members.

After making kneelers for the altar rail, they are now two-thirds of the way through making pew cushions, each one of which is different to reflect the personality of the person sewing it.

For some time now they have been concentrating on making items to sell at this festival, ranging from bookmarks and lavender bags to scissor cases and tote bags. They also have a range of beautiful pincushions stuffed with wool from local sheep which prevents the pins from rusting. Each item is handmade and unique.

Photographic exhibition

Rosanna Mount trained at St Martin's School of Art studying Fine Art. She has painted in many media and also taught art. Photography is another of her talents and that is what she is exhibiting here. Photographs may be purchased to order.

What to see.....in The Court Hall



Local history exhibition

There is evidence of settlement in East Meon long before the Roman invasion of the 1st century AD. After the departure of the Romans three centuries later, followed the 'Dark Ages' with invasions of Saxons and Jutes. In 899 King Alfred on his death bequeathed East and West Meon to his younger son.

By the time of the Norman Conquest in 1066 East Meon was a substantial settlement and the Domesday Book of 1086 records a population of 425.

The Norman church was built by the then Bishops of Winchester between 1075 and 1150. The spire, south aisle and Lady Chapel were added around 1230. For 800 years successive Bishops were Lords of the Manor.

The village is still a thriving community with the church at its heart, a population of 1200, a school, shop and 2 pubs.

The magnificent 14th century Court Hall which is a fitting venue for this fascinating exhibition mounted by the Local History Group is where the stewards of the Bishops of Winchester held the manorial courts.

Refreshments

Take a break from your Festival experience to sample some delicious home made cakes plus tea, coffee, soft drinks and ice cream served during the Festival opening hours.

..... and in The Court Hall marquee



A chance to browse a selection of stalls, including

Greenwood crafts

Local greenwood craftsman, James Cooke, will be demonstrating his skills and exhibiting his wares.

East Meon cookery book stall

Tried and tested recipes from a number of enthusiastic and talented cooks in the village compiled into a single volume.

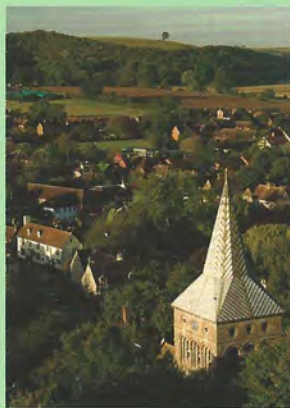
Plant stall

Sale of locally-grown garden plants.

Produce stall

A selection of homemade jams, chutneys etc.





Friday 22nd June

Festival opening times: 10am to 5pm

11am and 2pm

Flower arranging demonstration by Lorna Clive, a Constance Spry trained flower arranger, and a member of the team of flower arrangers responsible for the spectacular displays in the church. Lorna will be treating visitors to a display of her art in The Court House marquee.

3pm

Organ recital in the church by Richard Martin, a talented and respected Hampshire musician, who will be playing a selection of baroque and late 19th century French music. Composers will include J S Bach, Louis Vierne, Leon Boellmann and Lefebure-Wely. Donations welcome.

3.30pm

Guided walk around East Meon led by a local historian, who will point out the various buildings in the village dating from the 12th century to the present day and displaying a wide variety of architectural styles. The walk will be gentle and will take approximately one hour. Tickets £2. Assemble in The Court Hall.

7pm

Concert in the church 'Music for a Summer Evening'. An evening of light classical and contemporary music with some of Hampshire's finest young musicians. Optional supper in The Court Hall afterwards. Admission by ticket only. Tickets: £15 or £25 to include supper. See the detailed programme on pages 14 and 15.



Saturday 23rd June

Festival opening times: 10am to 6pm

11am and 2pm

Story telling in the south transept by Sarah Perceval, a professional storyteller who specialises in captivating and magical wisdom stories from around the world. Each session lasts approximately 45 minutes and is suitable for a family audience. Donations welcome.

12.15pm to 1pm (in The Court Hall)

'What's in a name?' - Illustrated talk with slides about the origin of wild and garden plant names, by Rosemary Hopewell.

3pm

Guided walk around East Meon led by a local historian (details as Friday).

3pm to 5pm

Bell ringing demonstration and bell tower open plus explanatory DVD for those unable to access the bell tower. The bells are a fine sounding 18cwt ring of 10 in excellent condition with a team of ringers ranging in age from 12 to 75. They are rung regularly for Sunday morning service and special occasions.

7pm

Production of Shakespeare's 'As You Like It' by the Rain or Shine Theatre Company in The Court House garden. Bring your own picnic from 6pm. Details in panel on this page.

Sunday 24th June

Festival opening times: 12noon to 5.30pm

10.30am

Festival Eucharist. Celebrant and preacher: the Right Revd Christopher Foster, Bishop of Portsmouth.

2pm to 3.30pm

Bell ringing demonstration and bell tower open + explanatory DVD (details as for Saturday)

2pm to 5pm

The gardens of The Court House will be open to the public with a sale of unusual plants by Butterfly Cottage Garden Plants of Cheriton.

2pm

Guided walk round East Meon led by a local historian (details as for Friday).

3.30pm to 4.30pm

Dickens readings and nature poetry by Edward Thomas and others - performed by James and Jo Murphy, who both live in East Meon. James is a poet and Jo is a theatre arts specialist and drama teacher. Donations welcome.

6pm

Choral evensong with choristers from Portsmouth Cathedral. The address 'Can these stones live? Reflections of a Church historian' will be given by Dr John Crook, architectural historian and author.

Monday 25th June

Festival opening times: 10am to 1pm

1pm

Festival closes followed by a distribution of posies and pots.



Rain or Shine Theatre Company present



In The Court House
Garden, East Meon,
Saturday 23rd June, 7pm.

Tickets £12.50, £11.50
concessions, £6 child
(5-15) on the gate or tel:
01730 823274.

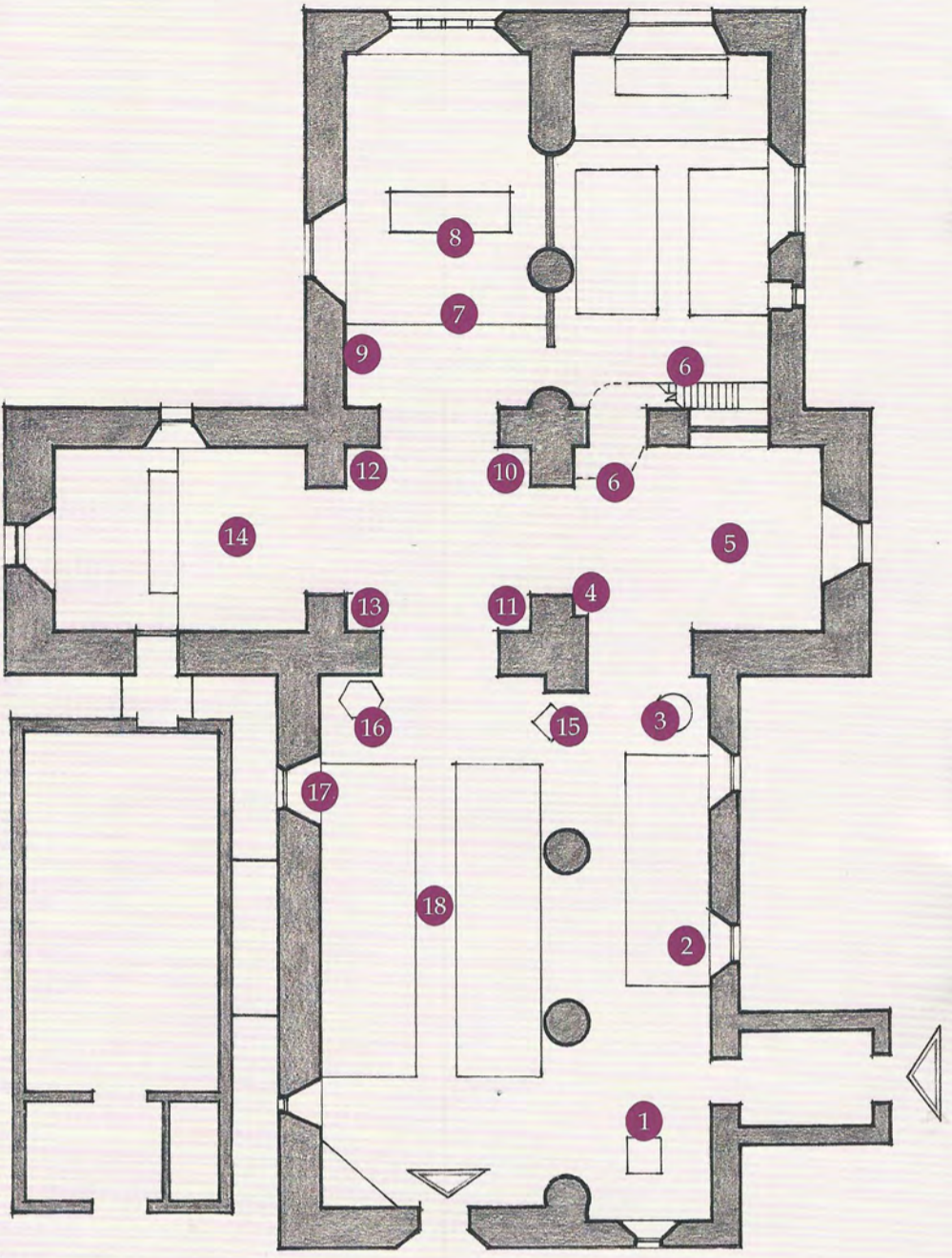
Gates open 6pm.
Duration of performance
approx. 2hrs 30 minutes
(inc 20 minute interval).

Bring your own picnic,
rugs or low-backed
chairs and dress for the
weather.

Performance continues,
rain or shine, in all but
the worst weather.
Tickets non-refundable.

www.rainorshine.co.uk

Plan of themed displays



1 East Meon Cubs

East Meon Cubs are a 'pack' of around 20 boys and girls aged eight to ten and a half from East Meon and the surrounding villages, who meet at the village hall on Tuesday evenings to try out new activities, have fun and make friends. Their display represents St George and the Dragon.

2 Garden Club

This group of enthusiastic gardeners meets monthly to exchange ideas and listen to excellent speakers on a range of related subjects. The two windowsills take the idea of village cottage gardens looking through to the hills and the countryside beyond.

3 History Group

Although East Meon has a long and fascinating history, the History Group is relatively new. It has researched some of the interesting buildings in the village and is responsible for the exhibition in The Court Hall. Their display is a sun dial with the periods of history represented by segments, created by the tiny flower heads of Santini chrysanthemums.

4 Care Group

The East Meon Care Group is a voluntary organisation which has been driving the elderly and disabled to surgery and hospital appointments, dentists and chiropodists, for more than



Before moving on from the first display take time out to admire the magnificent black marble Tournai font, one of only seven in the country, which has been there since the completion of the original church in 1150. The carvings on the four sides are illustrations from the opening chapters of Genesis, executed in Romanesque style.



thirty years. Their display here gives some indication of what they do and where they go!

5 East Meon C of E Primary School

The School, Pre-School Group and Mother and Toddler Group are all represented in the south transept. They have created a very special area with an archway made by a local greenwood craftsman, James Cooke. The willow, hazel and oak trees represent the school class theme. Children of all ages have contributed to decorating the area with handmade flowers, birds and butterflies.

Be sure to admire the entries and prizewinners in the children's art competition which are also exhibited in the School area.

6 Church Bells

The church is very proud of its ten bells and team of bell ringers who ring regularly for services, celebrations and half muffled for sombre occasions. The flower arrangement has been designed to flow around the bell model, reflecting its shape. The colours of the flowers emphasise the traditional 'sallie' colours of red, white and blue. The bell ropes are made of carnations.

Description of themed displays

7 Embroidery Group

This group of needleworkers formed in 2009 following the completion of the Millennium Embroidery (on show in the north transept) and the altar rail kneelers. They have already completed some 76 pew cushions. The carpet of flowers they have created here reflects the design of the altar rail kneelers.

8 Bible Study Group (on the high altar)

This group is represented on the high altar by deep red roses, green and cream flowers with touches of gold echoing the colours of the altar frontal and carpet. The central cross has vine leaves and cream roses. The Bible Study Group meets on alternate weeks - a great time to learn more about their

faith and share thoughts. Everyone is welcome.

9 Village Hall

The village hall is used by many of the groups in the village for their meetings, is an important facility and a vital part of the community life. The display here represents the hall's new flag designed by local resident Miles Hartwell which echoes the Parish Council logo showing Park Hill, the church spire and blue sky behind it.

10 Allotments

East Meon is fortunate to have two areas dedicated to allotments. Some of the 14 plots on the original site have been halved, but this still did not satisfy demand so the Parish Council created 17 new allotments

about five years ago. All the vegetables in their display have been homegrown.

11 Farming

Farming is one of the main industries in the village, going back through generations and still vitally important today. They have used old farm memorabilia in their display: milk churn, troughs, implements etc, together with fauna and flowers such as sunflowers, larkspur and ferns to reflect farming alongside the countryside. This display links up with that of the allotments.

12 Cricket Club

In existence since 1796, East Meon Cricket Club plays around 30 evening and weekend games each season. Players are all local and all are welcome. The Club raises money for local causes and runs an annual Beer and Music Festival - held on July 7 this year (see club website). The flowers in the display include the colours of the club blazer.

13 Golf Society

East Meon Golf Society has about 25 members and has been going for about ten years. They play every month with prizes for the best score, nearest the pin etc. There are also annual trophies in a number of different categories. Their colourful display reflects the club colours and represents the sport in flowers of dark blue, yellow and white.





At this stage you will not fail to notice the magnificent Millennium Embroidery, which depicts the village of East Meon and took a team of 30 embroiderers six years to complete. It is displayed in a specially made oak cabinet and illuminated by optical fibres designed to minimise fading. It was dedicated by the Archdeacon of Portsmouth on 2nd November 2008.

14 Hen Wood

Hen Wood on the Bereleigh Estate consists primarily of beech grown for timber and conservation and has been managed for many years by Ron Patrick, who has potted up trees for use in this display. Also growing in this important local woodland are ash, maple, pines, hazel, elder and holly, and you may see and hear deer, owls, buzzards, kites, foxes, badgers, squirrels, hares and rabbits.

15 A Summer Wedding (the lectern pedestal)

The lectern pedestal is often the centrepiece of a decorated church. Here it provides the 'echo' to the bridesmaids dresses - the soft and subtle shades of summer. A number of flower types are blended so

the colours flow, with pockets of deeper tones to hold the eye a little longer.

16 The Pulpit

This display has a country cottage theme with the lower part representing a field with country-style flowers, and roses and other sweet smelling flowers round the top. The olive tree next to the crucifix behind the pulpit represents the connection with the Holy Land.

17 Church Choir

The choir consists of up to 15 amateur choral enthusiasts from the village led by choirmaster Chris Copley and gives much pleasure to people who love music in the village. Their display on the pulpit windowsill of an open book with music represents their interest.

18 Sunday Club (the pew ends)

Once a month in the Church Hall the Sunday Club welcomes children of all ages. They can learn a little more about the Christian faith while having lots of fun with their friends. The decorated butterflies 'hovering' above the simple flower displays on the pew ends are the result of one of their latest projects 'All things bright and beautiful'.



Now exit through the West Door and into the Church Hall for the Art Exhibition and Craft Stall.

Music for a Summer Evening

East Meon Flower Festival is delighted to welcome some of Hampshire's finest young musicians who will be treating us to an evening of light classical and contemporary music in the stunning surrounds of our magnificent 12th century church decked out with flowers.

Programme

Hampshire String Quartet

Quartet no 1. 1st Movement – Smetana

Martin Head – pianist

Gymnopedie no 1 – Erik Satie

Prelude no 15 op 28 in D flat (Raindrop prelude)

- Chopin

Erica Flint and Molly Roworth – Flute duo

Accompanied by Colin New on piano

'Maya' – Ian Clarke

MELO – vocal group

Joined by Kim Seagrove

Their own selection of popular songs

Interval – a bar will be available

Hampshire String Quartet

Quartet in D Minor – no 15 K421 First Movement

- Mozart

Divertimento in D - Mozart

Erica Flint and Molly Roworth – Flute duo

Accompanied by Colin New on piano

Andante and Rondo – Doppler

Martin Head – pianist

Clair de lune – Debussy

Clouds no 2 – T Takemitsu

MELO – vocal group

Joined by Kim Seagrove

Their own selection of popular songs

Performers

The Hampshire String Quartet

A generous grant from Hampshire County Council Leader's fund enabled Hampshire Music Service to purchase a string quartet of quality instruments easily capable of taking their players to Grade 8 and beyond.

Players for the quartet were chosen in a wide selection process overseen by Chris Hiron, the HMS strings consultant. The quartet is regularly invited to perform at major events in Hampshire and will be representing Hampshire Music Service at the Music for Youth National Finals in Birmingham in July.

All four regular players Sarah Hargrave (18), Rachel Maxey (17), Natalie Rickard (16) and Eleanor Shute (17) are studying at Peter Symonds 6th Form College and range from Grade 8 to Diploma level.

Martin Head – pianist

Martin is in year 10 at the Rookwood School in Andover. He has been playing the piano for seven years and is also a very accomplished violin player, playing with the Basingstoke Area Youth Orchestra. In a recent audition for Hampshire County Council's Music Award for Exceptional Ability he was the only student to be offered an award on two



Martin Head

instruments. Earlier in June he was invited to perform in Winchester at the Bishop's Marquee at one of a series of events to welcome the new Bishop.

Molly Roworth and Erica Hunt - flute duo

Molly (18) is currently studying music at Queen Mary's College and holds a County Council Exceptional Musical Ability award. She has played the flute since she was eight years old and plays with the Basingstoke Youth Orchestras where she also plays the saxophone. In July she is taking part in the National Finals of Music for Youth in Birmingham where she is a soloist.

Erica (14) attends Ash Manor School in Aldershot and has been playing the flute for seven years. She is a member of the Hampshire County Youth Wind Band and is an award student with Hampshire County Council's Music Service. She is a past member of the National Children's Orchestra of Great Britain. Last summer, she had the privilege of performing with Claire Jones, international



The Hampshire String Quartet



MELO

Courtesy Caitlin MoGrudge

concert harpist and former Official Harpist to The Prince of Wales, at a recital in Basingstoke, playing the first movement of Mozart's Concerto for Flute and Harp.

MELO - vocal group

The four members of MELO (the name of the group comes from the initials of the original singers) are all Exceptional Musical Ability award winners. The group has enjoyed much success as

a close vocal harmony group performing compilations of recent chart hits which they rearrange themselves. Earlier this year they made it to the finals of the national 'Unsigned Live' competition which led to a performance at the O2 arena.

Emily Stewart (18), Olivia Tambini (18) and Kelly Childs (17) will be joined tonight by their teacher Kim Seagrove.