

ORCIAN - PROPOSED ELEVATION.

800.

ALL DIMENSIONS CRUCIAL
 EAST MEAN.

Scale: N.T.S. Part. no.

Date: OCT. 81.

2040/2

BRANDT POTTER AND PARTNERS
 De Vaux House, De Vaux Place, Salisbury 10723 5.386

800. ORGAN Dr N.W. corner nave

1. The organ stands in the N.W. corner of the nave and the specification is as follows:

The new instrument to be built in the north-west corner of the nave incorporating some period pipework, console doors and fall.

<u>Great C - c61</u>	<u>Swell C - c61</u>	<u>Pedal C - f30</u>
Gedeckt 8) shared	Stopped Diapason 8	Bourdon 16 (12 pipes, 18 fr. Ged)
Salicional 8) bass	Principal 4	Gedeckt 8 (fr. Great)
Principal 4	Blockflute 2	Flute 4 (ext. Ged)
Fifteenth 2	Mixture II	Great to Pedal
Swell to Great	Sub Octave	Swell to Pedal
	Octave	

The pipework standing on two chests, one above the other, with internal direct pallet action. The blower, regulator and transformer rectifier below the lower chest and behind the attached console.

The swell work enclosed by glass louvres and the lower area around the console panelled with oak veneered materials.

Since being built, holes 1" in diameter have been drilled in the two side panels, in the form of a cross. This is to alleviate the damp. (1985).

2. Case is oak and glass
3. May 1982
4. 518.5 x 260
5. Peter Wells (organbuilder). 17 Oakfield, Hawkhurst, Kent
6. Peter Wells (organbuilder). 17 Oakfield, hawkhurst, Kent
7. New organ was built to replace the old organ in the North Transept
- 8 - 9 -
10. Original specifications from the Vicarage files. Minute 4/21
11. -

801. TURRET CLOCK Ph (2) Tower

1. Outside: There are 3 clock faces on the East, South and West sides of the tower. These are painted blue with gold Roman numerals, minutes, and hands.

Inside: The clock is built on a cast iron base approx. 100 x 40 cm carrying cast side plates. The base carries 2 cast nameplates as follows.

- | | |
|----------------|-----------------|
| 1. J.W. BENSON | 2. CLOCKMAKER |
| LUDGATE HILL | TO THE QUEEN & |
| LONDON | PRINCE OF WALES |

The minute dial is engraved

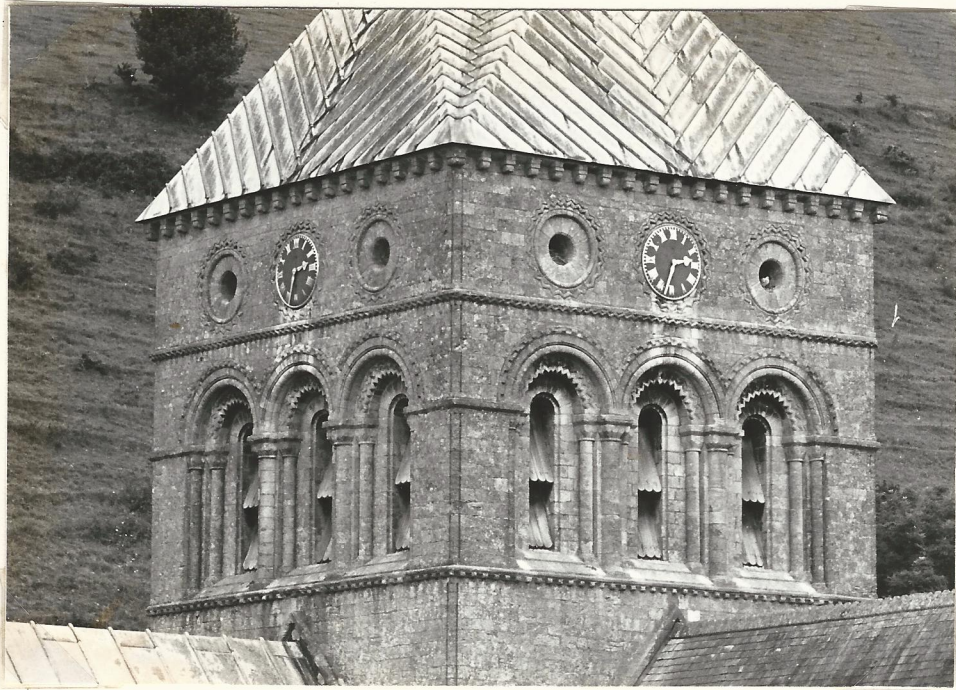
J.W. BENSON
LUDGATE HILL
1883

The clock is driven by a pendant weight and controlled by a pendulum. The driving weight was hand raised by crank and ratchet until 1978, when an automatic electric winding gear was installed by clockmaker

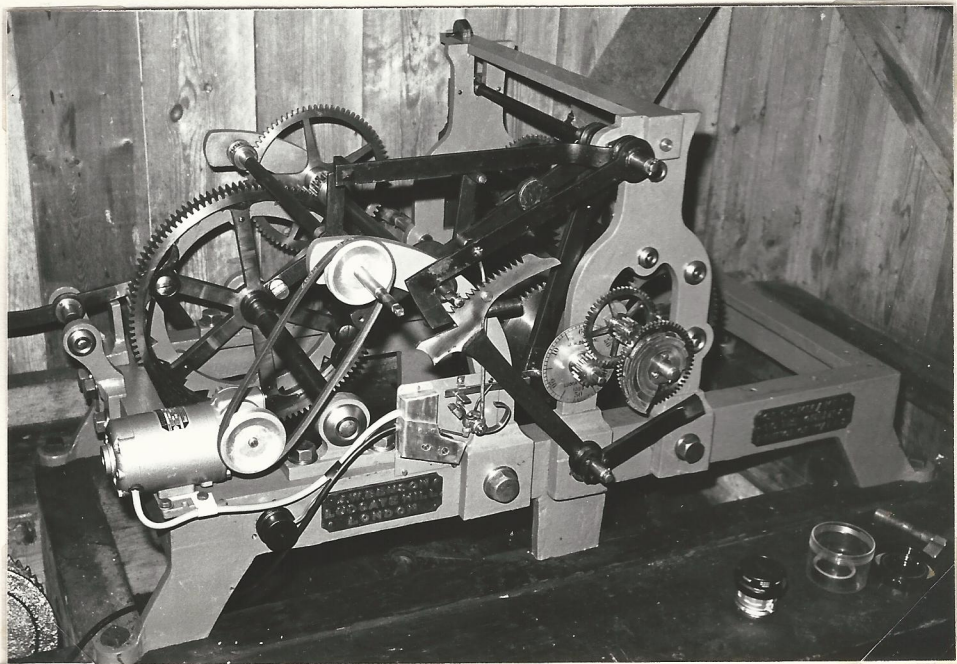
H. TOTTLE OF HORNDEN.

The clock dial facing south is driven from the mechanism by a roller chain and sprockets. The dials facing East and West are driven from the South dial by mitre gears and shafts. The clock strikes the hours when connected to one of the church bells.

cont/....



801



801



802

804./cont.

10. Flyleaf of Burial Register 1875 - present day
Canon Masters Church leaflet
11. -

805. LIGHTING

Throughout Church

1. In nave there are three hanging lights. From one central chain - 6 chains splay out to hold a metal ring, below which are simple shaded lights. The South transept and Lady Chapel each have one similar light. The South Aisle has two smaller but similar lights each having 3 shaded lights. The north transept has two single lights on either side of south wall. The chancel has three spot lights on west wall above the arch and one strip light on north wall. Above the screen with Lady Chapel there is a flourescent light, and there is a spot light above the pulpit.
2. Metal
3. 20th century
- 4 - 6 -
7. Light above screen donated from old village hall in 1973
- 8 - 11 -

806. LIGHT OVER LECTURN

Nave

1. A brass wall bracket of double candle design.
2. brass
3. 1949
4. 385 x 290 x 205
5. -
6. Installed by Mr Pite
7. This light was placed here on the instructions of Dr Buddon without consultation with anyone about design or price. It is not liked and the price is regarded as excessive. It cost £6.18.6d.
- 8 - 9 -
10. PCC Minutes 24.1.49
11. -

807. LIGHT BELOW REREDOS

Lady Chapel

1. Below the Reredos are two strip lights angled to light up the Reredos. They are attached to a triangular shaped piece of metal.
2. Metal and glass
3. June 1951
4. Each light is 920 cm long
- 5 - 9 -
10. PCC Minutes June 1951
11. -

808. HEATING

Throughout Church

1. In nave there are 12 electric heating bars attached to the backs of the seats of central pews. The priest stalls each have a heating bar and the four choir stalls.
2. Metal
3. 20th century
4. Nave 240 long
Priest stall 122 long
Choir stalls 240 long
- 5 - 11 -

809. VASES

Cupboard behind
Priest stall

- A pair of tall cut glass vases 350 high
- A tall green glass vase 250 high
- A tall cut glass vase 250 high
- A plain glass vase 200 high
- A large double handled grey pottery vase 420 high
- A plain grey pottery vase 260 high
- A white double handled pottery vase 310 high
- A pair of unglazed pottery vases 215 high
- A blue and brown half glazed pottery jug 230 high
- A quantity of white vases - various shapes and sizes