

## Farm buildings in East Meon

Michael Blakstad, East Meon History Group, October 2017



*Fig 1. Roof timbers of Upper Parsonage Barn*

Introduction.....	2
The South Downs.....	2
Iron Age, Roman and Saxon East Meon.....	2
The Middle Ages.....	3
The farming year.....	5
Medieval Farm Buildings .....	7
Early Modern .....	10
Land ownership.....	13
Oxenbourne.....	15
Farm Buildings.....	18
The Industrial Revolution .....	32
The twentieth century .....	39
Dairy farming.....	40
Conclusion .....	44
Appendix 1 Lands rented by Nicholas Wright, 1567 .....	45
Appendix 2 The conservation of farm buildings in Oxenbourne .....	46
Appendix 3 Recollections by the Jones family of Hill Hampton .....	49
Memoir of Stanley Eli Jones.....	49
Richard Jones on Hill Hampton.....	51
Appendix 4 Garston Barn Correspondence .....	53
Appendix 5. Garston Farm Correspondence.....	57
Appendix 6 Interview with Charlotte Duthie.....	59

## Introduction

Farm buildings tend not to survive. The earliest buildings were flimsy and impractical, so collapsed or were replaced. Even the sturdier structures of later periods were often rebuilt or replaced to accommodate new farming techniques; in recent decades many have been converted into residences. For most of its existence, East Meon has been an agricultural community. A few medieval hall houses and a greater number of early modern buildings have survived which were built to accommodate farmers and farm-workers, but no barn or out-building survives in the parish from earlier than the seventeenth century.

East Meon was the core settlement of a Hundred which for almost 1,000 years included twelve tithings; the bishops of Winchester were lords of two manors, Meon Manor and the smaller Meon Ecclesia and much of the land was farmed 'in demesne' by the diocese; together, the Meon manors were the diocese's largest Hampshire estate and its records provide us with valuable information about farm life. This paper concentrates on two tithings, East Meon and neighbouring Oxenbourne, and describes changes in farming techniques and land ownership which led to the development of farm buildings.

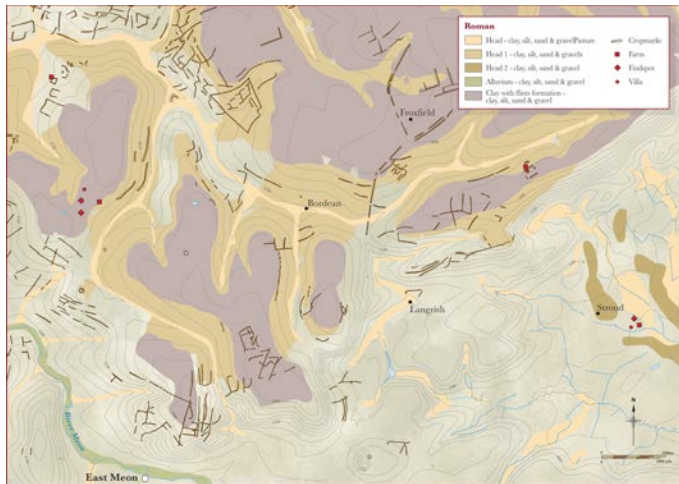
The research was part of a project by East Meon History Group to study the history of 'Farming the Valley', and reference is made to other reports produced during this research; PDFs are at [www.eastmeonhistorygroup.net/farming the valley](http://www.eastmeonhistorygroup.net/farming_the_valley).

## The South Downs

East Meon occupies a valley to the north of the South Downs; to its north are the Hangers and the River Meon rises to the south of the village. It is chalk country with loam in the valley and flints swept from the hills. This was so-called 'whiteland', or 'malm'. Over centuries, the chalky soils of the downs have provided grasses which suit sheep, sweet when nibbled short<sup>1</sup>. The arable land both in the valley and on the hill was maintained by the dung of sheep fed on the downs. This virtuous circle provided the basis for farming in this valley, although as we shall see, the methods of cultivation changed dramatically over the period, and with them the buildings which housed the farmers, their animals and their equipment.

## Iron Age, Roman and Saxon East Meon

The earliest dwellings in this part of Hampshire were on high ground on either side of the river valley. The most notable Iron Age site was the fort on Winchester Hill, but so-called Celtic crop marks show that farming took place both on the South Downs and to the north of today's village; there are remains



Map 1 Remains of Roman dwellings, on high ground to the north of today's East Meon

of Roman dwellings at Old Down Farm, Peak Farm, Ridgehanger and the Roman villa in Stroud. These are indicated in red on *map 1* and described in more detail in Betty Wesley's paper 'Roman Farming in the East Meon Hundred'<sup>ii</sup>.

During Saxon times, the men and women who had lived and worked in isolated farmsteads started to descend into the valleys and cluster into settlements; Ian Wesley's paper on Anglo-Saxon Farming in East Meon Hundred provides detail of this period<sup>iii</sup>. No buildings survive from the period and the types of dwelling can be surmised from recreations of Anglo-Saxon houses in other parts of England (*figs 2 & 3*)

During Saxon times, the men and women who had lived and worked in isolated farmsteads started to descend into the valleys and cluster into settlements;



Fig 2. Sunken house (or Grubenhous), St Edmundsbury



Fig 3 The Living House at West Stow Anglo-Saxon Country Park, Bury St Edmunds Suffolk.

### The Middle Ages

The Domesday Book has separate entries for the two manors, recording 8,640 acres of land in Mene Manor and 720 in Mene Ecclesia, which was completely surrounded by the larger manor. Mene Manor was rated for tax of £100.00 ('*which appears too much ...*') and Mene Ecclesia at £5.00. No building survives from the time of William the Conqueror, but Hampshire historians Elizabeth Lewis and Edward Roberts created a model of the village as it might have been in 1086 (*Fig 4*).



Fig 4. Model created for “Domesday Village” exhibition in 1986. The church is top left, and the manorial hall below it, with its ‘curia’, or enclosure of farm buildings. The model is at La Musée de la Tapisserie, Bayeux<sup>iv</sup>

The Domesday model of East Meon shows farm buildings within the curtilage of the bishop’s manorial hall, in which animals, equipment and grain were kept. Tenant farmers were obliged to deliver to the rector, the bishop of Winchester, one tenth of all harvested crops: there would have been a tithe barn in the curia, and others in the open fields<sup>v</sup>. There was also a manorial barn, for grain from the lands cultivated by the diocese ‘*in demesne*’: serfs or villeins were bound by tenancy agreements to provide ‘labour services’, an agreed number of day’s work on the bishop’s land. The grain was threshed during the winter, and either consumed by the bishop’s household, sold locally, or carted to his palace at Wolvesey in Winchester. There was also a byre for cattle, stables for cart-horses, a dairy, granary, carthouse and a cider press. The diocese kept meticulous records, the Winchester Pipe Rolls, which included the ‘*cost of buildings*’. The Roll for East Meon Manor in 1301 includes this entry:

*Re-roofing the bailiff’s stable and the carthorses’ stable ... 2s; repairing the mangers of the said stables 8d. re-roofing and mending the unroofed building of the press 2s., re-roofing and mending the granary 6d. Building anew 1 building for stabling the cart-horses and carts £1 1s 5d ... Mending the walls of the dairy and the door of the same building 5d; mending the barn-door and likewise the gate of the curia ... 10½d ... casks, hooping and mending tubs and barrows, casks of cider, tallow and soap for the press, sieve for straining cider ... Total £2 17s 2d.*

Meon Ecclesia has its own entry under *cost of buildings*, which includes ‘*re-roofing the bailiff’s stable ... building anew 1 building for stabling the cart-horses and carts... mending the barn-door and likewise the gate of the curia ...* There are also

accounts for the cost of maintaining *Ploughs, Carts and Sheepfold and Sheepcote ...* the last being the mobile wickets used to herd the flocks grazing the Downs.

The main *issues of the grange* were wheat, barley and oats, and sheep were the principal livestock; the Rolls record 57 *oxen*, for ploughing with some *cows, bulls, steers* and *bullocks*; the diocese also charged for *pannage* in its woods of *hogs, sows, hoglets and hoggets*.

The Domesday model shows that almost every village dwelling had a ‘curtilage’ – land in which the owners grew vegetables and probably kept chickens and pigs. Villeins, ‘unfree’ tenants of land, may have housed a cow or two, which they led to the cow-down, common to the whole ‘township’: a herd took charge of the beasts of all the tenants. These farmers rented ‘lands’ (or ‘furlongs’ – strips of arable land) in three or more of the open fields in each tithing, to enable rotation, and they went out each day to cultivate them. As part of their rental agreement with the diocese, villeins as well as serfs were obliged to provide an agreed number of days’ work on the diocesan land (while serfs were bound to work all their days for the bishop).

### The farming year



The medieval farming year is illustrated in the Julius Work Calendar © *The British Library*, inscribed in 1000AD, which depicted scenes of farming for each month.



*Figs 5 & 6 Julius Work calendar: Ploughing in January, digging and harrowing in March*



*Fig 7: harvesting in August*



Fig 8 threshing in December.

The Pipe Rolls show us that in the mid-fourteenth century, 473 acres in East Meon were cultivated as arable, combined with livestock, mainly sheep. During the period 1345 – 1433, across all the lands held by the Diocese of Winchester, about 40% of the demesne acreage sown was under wheat, up to 24% under barley and between 35% and 24% was under oats. Of other crops, legumes were the most important with 7-8% of sown acreage ... a mixture of wheat and rye called ‘*mancorn*’ had been popular but was declining<sup>vi</sup>. Crops were rotated by arrangement between the tenant farmers: typically, one field would be put down to wheat, a second to barley and a third left fallow. The following year, the fallow field would be ploughed and planted with wheat, the field that had been harvested for wheat would be ploughed and planted with barley, and the field that had been used for barley would be left fallow. The entire community had common grazing rights on ploughland when it lay fallow and on land that was deemed ‘*wast*’, including the common. The 1301 Pipe Roll records that ‘*Issues of the manor*’ that year included nearly £3 from pannage, which bought the right to turn pigs out for fodder in the woods or park, with the caveat that this year there was ‘*no mast in the park*’ for the pigs to eat (beech-nuts, acorns, chestnuts and other fruits of the forest). In September, pigs were at their fattest and the oldest were turned into sausages and pies<sup>vii</sup>.

The wheeled plough (*fig 5*) was the foundation of life in the Middle Ages: it opened the soil to the air and water, enabling soluble minerals to reach deeper levels, while rooting out weeds and tossing them aside to wither in the open air<sup>viii</sup>. Ploughs were drawn mainly by oxen; medieval farmers ploughed land to feed humans; they would have been shocked at the thought of producing animal feed<sup>ix</sup>. farm animals were lean and rangy, their meat containing three times as much protein as fat (the reverse of the modern ratio). Eight-ox teams were used to prepare for winter and spring sowing, which was done by hand as were weeding, harvesting, stacking and threshing the corn (*figs 6, 7 & 8*). Some horses were used for ploughing and also used to draw carts but they needed a more varied diet than oxen, and regular shoeing. Moreover, oxen did not lose their value after retirement since they could be fattened for meat. The period saw an increase in sheep flocks; the mean size of the flock in East Meon manor in the fourteenth century was 2,000<sup>x</sup>. Sheep were ‘folded’ from patch to patch by shepherds using wicker hurdles: their manure in turn fertilised the fields. The nearby town of Petersfield had its charter confirmed in 1192 and provided a local market especially for wool. The Black Death in 1348/9 dramatically reduced the workforce and obliged the diocese to farm less in demesne and rent out more of its lands; the effects are described more fully in another report.<sup>xi</sup> Then, the 1360s and 70s saw increased demand for wool from downland sheep, though this fell later. Once the harvest had been gathered in early medieval times, every farmer and householder had to work out the basic equation of survival through the winter. How long would the content of their larder last and which animals would live long enough to justify their fodder<sup>xii</sup>?

### Medieval Farm Buildings

Medieval agriculture required few buildings for the shelter of animals, which were left out of doors or shared their owners' accommodation. As we have seen, the Court House *curia* had buildings for animals and farm equipment as well as services such as dairy and cider-making. There were a few '*messuages*', or enclosures belonging to the most successful villeins, some of which had out-houses; these tended to be constructed in courtyards partly for security. Few farmsteads stood alone in the fields; villeins and serfs alike lived in clusters of dwellings, designated as '*townships*' or tithings. '*Tofts*' belonging to prosperous yeomen often included a barn for storing grain. On all the bishop's granges, tithe barns would have been strategically placed among the open fields, for the collection, storage and later threshing of one tenth of all the grain grown by tenant farmers.

The simplest type of farm building was the longhouse, where people and animals lived in the same building, with animals at the lower end<sup>xiii</sup>. Houses were built around a timber framework formed of sturdy posts, stuck into the ground and tied by cross-beams into bays, fastened together with wooden pegs; these 'hall houses' had a large chamber with a fire in the centre, open from the beaten soil floor to the rafters which supported roofs of thatch or turf. Outside walls were constructed from any combination of clay, malmstone (quarried in Langrish), and flint, which was readily available on the downs. Great ingenuity was shown in the use of irregular flint, either whole or 'knapped', to provide a flat, attractive surface.

Some houses had a parlour added at one or both ends for the private use of the owner's family; internal walls were made of hazel wattle and daub of mud and dung. Some also had a ceiling of beams and planks over the parlour, thus creating a chamber, or 'soller', or loft, not originally for sleeping but for the storage of seed-corn, wool, cheese, bacon, saffron and other produce which could too precious to be entrusted to the barn, where they might be a prey to rats, damp and thieves<sup>xiv</sup>.

*Forge Sound & Riverside*

The earliest buildings whose original framework has survived in East Meon would have belonged to well-off villeins. Forge Sound and Riverside stand at right angles to each other forming a V straddling a crossing point in the river Meon, leading to the Court House.

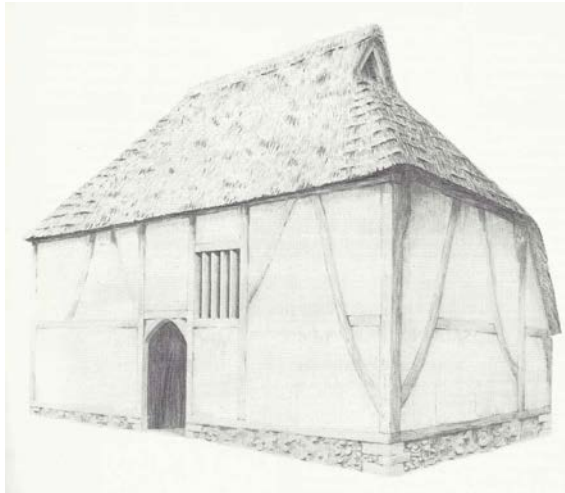


Fig 9 Reconstruction of Forge Sound in the 14<sup>th</sup> century<sup>xvi</sup>. Drawing by Nigel Fradgley

These two hall houses still retain their timber structures, built in the early 14<sup>th</sup> century, and are unique in Hampshire in that they are single-aisled hall-houses, in that their roof beams reach almost to the ground on one side of each hall, forming an aisle. The aisle at Forge Sound is to the west of the house, and Riverside's is on its eastern side. This drawing, taken from Edward Roberts' book *Medieval Hall Houses of the Winchester Area*, illustrates how Forge Sound would have looked when originally built<sup>xv</sup>. It was built of timber, wattle and daub on a flint base, and would originally have had a thatched roof; one section had two stories.

Fig 13 shows the ceiling beam blackened by the smoke from the open fire in the centre of the hall which escaped through a louvre in the centre of the ceiling and from 'gabllets' at the ends of gables; blackened wattle and daub are still visible in the sides of the louvres.



Fig 10 Forge Sound, East Meon, today; a 14<sup>th</sup> century single-aisled hall house

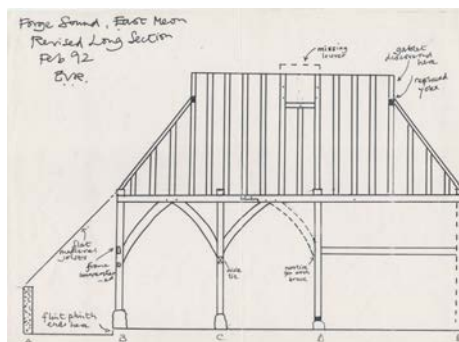


Fig 11 Edward Robert's diagram showing the western long section with aisle to the left.



Fig 12 The original structure of Forge Sound, drawing by Nigel Fradgley



Fig 13 Smoke-blackened beams in what is now the upper floor

Riverside has only recently been available for analysis by Edward Roberts and Bill Fergie; it comprises four bays, of which two formed an open hall which has a great curved timber, called a 'base cruck', which removed the need for an arcade post which would have obstructed the centre of the hall (*figs 14 – 17*). On one side of the hall was a small service bay where servants would have stored and cooked food for the household; on the other side is a *jettied* parlour, i.e. an upper chamber protruded beyond the ground floor; this is unusual in such an early house and indicates that the owner wished to demonstrate his superior status. Its use of timber is also extravagant and it may have had farm buildings attached; in the 19<sup>th</sup> and 20<sup>th</sup> centuries Riverside housed a butcher's shop and the animals were slaughtered in the stone out-building.

*(more to come when Edward and Robert return to conduct further examination.)*



*Fig 14 Riverside from the south, with Forge Sound beyond*



*Fig 15 Riverside seen from the north-east, with the single aisle.*



*Fig 16 Riverside, East Meon, Interior looking north, drawing by Nigel Fradgley*



*Fig 17 In the early 20<sup>th</sup> century, Riverside was a butcher's shop*

## Early Modern

Between 1500 and 1700, the population of England doubled and although 75% of the population still lived in the countryside, the growth of towns and cities created a hungry market for agricultural produce, whose prices rose six-fold<sup>xvii</sup>. So did land rents: between 1580 and 1640 they increased faster than the prices of agricultural produce<sup>xviii</sup>. Farming had to become more efficient.

East Anglian farmers turned to their continental counterparts and imported Dutchmen from whom they learned techniques especially of irrigation. The new methods were subsequently introduced to the chalk downlands of southern England; water-meadows along the Meon were now managed by sluices while flood management produced winter hay making it possible to feed more cattle over winter, which increased their size and yields. Crop rotation was revolutionised; instead of leaving fields fallow every third year, ‘up-and-down’ husbandry alternated ploughing fields and laying them down for grass; new fodder crops such as turnips were introduced and ‘artificial grasses’ such as sainfoin, trefoil and clover. Four-course rotation now alternated, first, wheat, then turnips, then barley and finally clover. Farmers learned to use manure more intensively and many located near large towns or cities diversified into the production of fruit, vegetables and hops; the price of hops rose by almost a third between 1640-79 and 1719-49<sup>xix</sup>. Climate, too, played a part in lowland England: drier weather led to increases in barley and wheat crops. Finally, the imported Dutch plough and the move from oxen to horses further increased yields.

The most efficient farmers became much wealthier and we can see from surveys of East Meon in 1567 and 1647 that a handful of yeomen now rented lands in several tithings. For instance, Nicholas Wright, who appears to have been the wealthiest man in the village in the last quarter of the sixteenth century, not only held a dozen properties in the tithing of East Meon but others in Riplington and Oxenbourne. Extracts from documents recording his holdings are attached as Appendix 1.

Wright’s rise to wealth coincided with a boom in housing which saw a growth in both the number and the size of buildings. In an attempt to control the proliferation of shanties built by migrant workers, an Act was passed in 1589 ‘against the erecting and maintaining of cottages’; local Justices of the Peace were obliged to prevent the building of any cottage ‘that hath not four acres of land to it’<sup>xx</sup>.



Map 2 East Meon in the 16<sup>th</sup> century, conjectural, based on today’s buildings which have survived or replaced earlier dwellings. New buildings were obliged to have four acres of land.

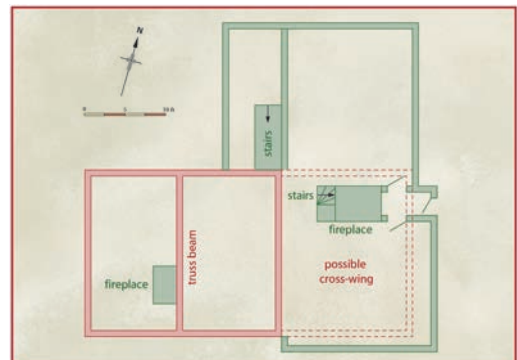
A brickworks was established in Stroud; the availability of cheaper brick made it possible to replace the open fires of hall houses with fireplaces and chimneys which ducted the smoke to the air outside and greatly improved living conditions. Brick also made it possible to divide the interior spaces more flexibly, which led to a new order, the farm household. Previously, each farmer, serf, villein or freeman, had lived in his own dwelling and worked the lands he rented in the open fields; more prosperous farmers with multiple holdings now employed others to work them and accommodated farm 'servants', both male and female, under one roof. Older houses were expanded and new houses were built as working units.

### *The Tudor House*

Nicholas Wright, so wealthy he was now designated a 'gentleman', set about expanding his medieval hall house into a substantial residence (now called 'The Tudor House', *Fig 18*). It was converted, probably in the 1580s, from a 14<sup>th</sup> century three-bay hall to an spacious farmhouse: to the original structure, which lay east to west along what is now Workhouse Lane, he added a north-south wing, *Map 3*, with the main entrance in the eastern wall, leading from what is now the Cross. Immediately opposite this entrance was a substantial central chimney with hearths on both sides; to the left/south and west were service areas and to the right/north, family rooms.



*Fig 18 The Tudor House photographed in 2007*



*Map 3 Floor plan, medieval hall house in pink, Elizabethan extension in green.*

The Tudor House was Wright's 'home farm' and the service areas included the kitchen with a communal dining table at which family and servants ate together, a dairy where women would have made butter and cheese, a pantry (*painterie*, or bakery), a buttery (*bouteillerie*, or brewery); to the west there may have been stalls for animals. Servants slept either in or above the kitchen.



*3D illustration of The Tudor House in the late 15<sup>th</sup> century*

This was the early modern ‘household’, which was in effect the family unit ... until the sixteenth century ‘*familia*’ means female servant, and children as young as 11 years old were sent away from their parents and siblings to work in farmhouses or workshops. When they were married, usually in their late 20s, they had to leave the household and set up on their own, as ‘gig’ economy farm workers.

Brick and wooden framework made it possible to build elaborate upper floors; the Wright family slept in upper chambers, while servants slept on floors in the kitchen; the space above the work areas were used for storage, away from damp and rats. This was, essentially, the first complete farmhouse; those who worked outdoors would still commute to the open fields, along with the married farm workers who now lived in their own dwellings.

### *Forge Cottage*



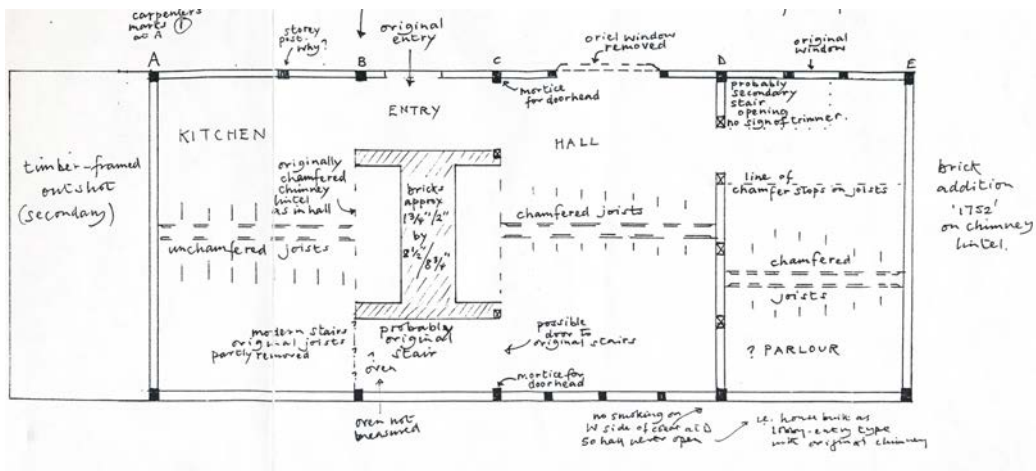
*Fig 19 Forge Cottage, 17<sup>th</sup> century yeoman's house*



Fig 20 Forge Cottage, hearth with oven



Fig 21 Forge Cottage, living room fireplace



Map 4, Edward Roberts' floor plan of Forge Cottage

Another farm household within the village of East Meon lived at what is today called Forge Cottage, next to the blacksmith's forge at the south-eastern end of the village. Built early in the 17<sup>th</sup> century at a time of vigorous house construction, this was the dwelling of a well-off yeoman. It too has a central chimney-breast with two hearths, *Figs 20 & 21*: one was the cooking range for the household, the other the fireplace of the owner's kin. The entrance led a small lobby abutting the chimney-breast, *Map 4*, with the owner's private chambers to the left of the door and the service areas to the right.

## Land ownership

### *The Civil War*

Alongside the early modern 'Agricultural Revolution' came changes in land ownership, first following the Dissolution of the Monasteries, then during the Civil War and finally after the Restoration of Charles II in 1660. The Civil War had visited East Meon in March 1644 when Sir William Waller's Parliamentary army encamped in Frogmore and Langrish; two local dignitaries, Sir William Lewis of Bordean *Fig 25* and Sir Hercules Langrish, had raised a Regiment of Foot and a Troop of Horse for Parliament, so many East Meon men would have served in that army; on March 28<sup>th</sup>, 12,000 men marched through East Meon on their way to the Battle of Cheriton<sup>xxi</sup>. In 1645, the Bill for the sale of Episcopal Lands led to Court Farm and South Farm being sold to Cromwell supporters Nathaniel Hallowses and Richard Dannald and in 1649, the manors were bought outright by Francis Allen MP, a contentious and very rich goldsmith-financier who had made the financial arrangements for the execution of Charles I<sup>xxii</sup>.



Fig 23 Sir William Lewis of Bordean



Fig 24, Sir Stephen Fox

After the Restoration of the monarchy in 1660 the Bishop of Winchester was reinstated as lord of the two manors, but much of the demesne land, including Court (or 'Church') Farm and South Farm, was leased to Sir Stephen Fox, Fig 24, who had managed the king's finances in exile.

South Farm lies outside the main settlement of East Meon and was one of the few farmsteads standing alone among fields: South Farm, close to the source of the River Meon and to South Mill, one of six mills recorded in Domesday East Meon. 'Fairfield', to the south west of the farmhouse, was the location of medieval fairs. There was a chapel-of-ease in Fairfield, known as St Mary in the Fields. A Parliamentary survey in 1647 contained a detailed description of South Farm, Figs 25 & 26. With its wainscotting (panelling) and 'convenient rooms' this must have been one of the finest farmhouses in the tithing.



Fig 25, cover of 1647 survey of South Farm

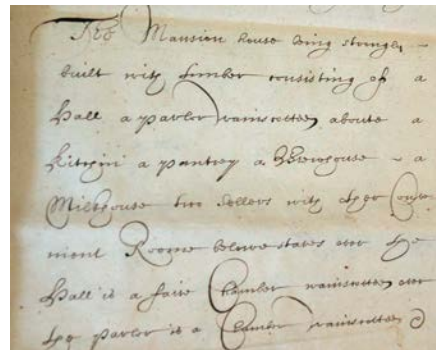


Fig 26 'The mansion house being strongly built with timber ...'

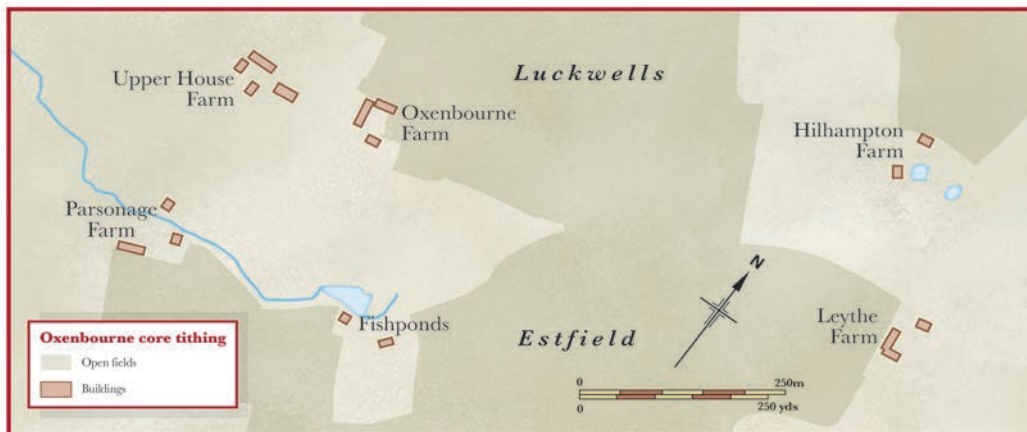
Sir William Lewis of Bordean (fig 23) had supported Parliament but changed his loyalty to the Monarch; he was allocated the deer parks of Hyden and Park. The new landowners in turn sub-let to local farmers and in 1662 Stephen Fox sold the lease of South Farm to a London doctor<sup>xxiii</sup>. They also set about buying from the diocese the 'greater', or rectorial, tithes which had been paid to the bishop, and the scene was set for a new pattern of land holdings and farm buildings. Wealthy landowners also consolidated their estates by acquiring fields belonging to less prosperous neighbours.

### Enclosures

In assessing the advances in agriculture in the early modern period, historians add another ingredient to innovations in irrigation, fertilisation, equipment and crop rotation: Enclosure. Progressive farmers found it difficult to introduce the new techniques in open fields in which every tenant had to work to the same pattern of rotation and sought to acquire and enclose land which they could cultivate more efficiently. It was relatively easy for the diocese to seal off its fields farmed 'in demesne', although they had to over-rule the rights of commoners to graze these fields 'after Lammas', when they had been harvested. Tenant farmers consolidated prime farmlands in the manors of East Meon through 'voluntary' agreements, exchanging their share of the open fields for patches of land at the edges and sometimes by providing cottages. In 1661 the earliest formal contract of enclosure in East Meon records such an agreement in the tithing of Oxenbourne; nine better-off farmers persuaded their landlord, the diocese of Winchester, to move their less successful neighbours to other locations so that they could enclose fields for their own exclusive use: a fuller account with the documentary evidence is provided in a separate report, 'Oxenbourne Tithing'<sup>xxiv</sup>.

### Oxenbourne

The 'township' of Oxenbourne then comprised a cluster of dwellings and farm buildings including what were later called Oxenbourne Farm, Upper House Farm, Parsonage Farm and Fishponds, surrounded by open fields and common pastures *Map 5*<sup>xxv</sup>. Until they were enclosed, residents went out each day to work the open fields of Luckwells, Estfield, Middlefield, Borowbredfurlong, Ellen's Barren, Boghcombe Furlong and others listed in the 1567 Rental<sup>xxvi</sup>.



*Map 5 The core tithing of Oxenbourne, taken from the 1852 Tithe Apportionments, with the open fields of Luckwells and Estfield. Parsonage Farm was a cluster of cottages for labourers and farm buildings and Fishponds was probably a 'vivarium', for breeding fish for the bishop. There is no evidence of a farmhouse at 'Leythe Farm' until the 17<sup>th</sup> century; before that, only Hilhampton stood apart from the core settlement.*

Early records are ambiguous as to whether Oxenbourne was part of Meon Manor or Meon Ecclesia. The relevant pages in the 1567 Rental are headed 'Oxenbourne & Ecclesia' and there are several place names with clerical connotations such as 'Priory', 'Parsonage &c. In the Middle Ages, only one farm is known to have stood alone in the fields outside the core settlement of Oxenbourne. Documentary evidence of Hill Hampton (variously spelled) dates back to the first half of the twelfth century, when a John de Menes bought the estate for ten marks; we know

that Richard de Midlington took possession and paid the highest taxes, 5s, in the tithing of Oxenbourne.



Fig 27, Conveyance from 'Will, bp of Winchester, and his co-feoffees to the pres. and scholars of Magd. Coll.' 1<sup>st</sup> Oct 1480

In 1480 the estate of Hillhampton, 350 acres in all, was given by Bishop of Winchester, William Waynflete, to Magdalen College Oxford; the contract (Fig 27) and the earlier records quoted here are held in the college archives. A separate report has been written which can be downloaded as a PDF<sup>xxvii</sup>.

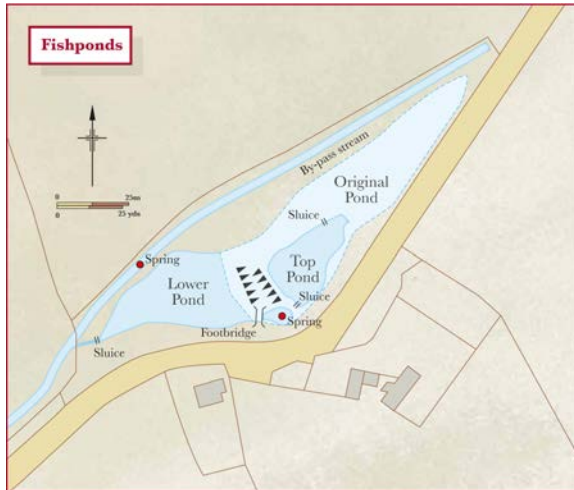


Map 7 Magdalen College lands in Oxenbourne

Waynflete had founded Magdalen thirty years earlier, and intended that rents from the land would help meet its running costs (map 6). The college held these lands in Oxenbourne until 1897.

Another reason why Oxenbourne should be designated as church land lies in the probability that the bishops had created a series of *vivaria*, or fish farms, in the tithing, at what is now Fishponds and below Giant's Cottage. There were probably two other two such fish farms, one at the source of the Meon, at South Farm, and another at Lower Farm; these too were farmed directly by the diocese.

Fresh fish was a delicacy reserved for the Bishop and his most important guests; the Pipe Roll of 1208 -1209 records that pike, perch, bream and roach were being bred in East Meon<sup>xxviii</sup>. There were several episcopal fish farms in the diocese: some, like Frensham Great Pond, were as large as 100 acres; those in East Meon were much smaller, but there was probably a series of ponds, one at Fishponds, map 6.



Map 6 Possible layout of vivarium at Fishponds. Today, silting has filled in much of the original area to form two smaller ponds.

Ponds were usually fed by a stream near the source of a river where water was cleanest; Fishponds is at the head of a tributary of the Meon, fed by run-off from the fields. A 'pond head', or sluice, controlled the flow of water into the *vivarium*, which could be closed to feed a bypass channel, to drain the pond or relieve flooding. When the main pond was being cleaned, fish were held in a smaller pond, or '*servatorium*'. Another system of dams and sluices at the bottom end of the pond controlled the water levels.



Fig 28 Fishponds today. In medieval times, the water might have come up to the fence.

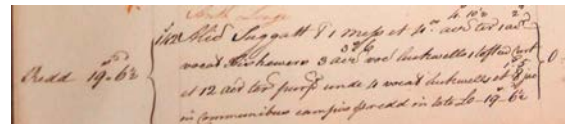


Fig 29 Entry in 1567 Rental showing a message named 'Fishewers', or 'Fish weir', in Oxenbourne tithing, held by Alice Suggatt along with lands in the neighbouring open field at Luckwell.

An entry in the 1567 Rental refers to a message named '*Fishewers*' (fig 29), or Fishweir, which suggests that there was a substantial dwelling before the current building; the farmer who lived here may have had some responsibility for the fish farm.



Fig 30. The house at Fishponds, re-built c1600 by a prosperous yeoman

Overlooking Fishponds today is an early 17<sup>th</sup> century house, now extended, whose original herring-bone brick-work and oak panelling suggests it was built by a prosperous yeoman farmer; the original doorway - shown (fig 30) bricked in - led to a small lobby and chimney breast, with service areas to the left and the owner's chambers to the right, as in other early modern farmhouses.

## Farm Buildings

Following Enclosure, farmers set about hedging and walling their estates and building farmsteads outside the settlement among their fields, with dedicated farm buildings including barns, granaries, stables, byres, and carhouses. From the 17<sup>th</sup> century onwards, farm houses were augmented by new buildings to form farm yards, and five Oxenbourne farms offer examples of their development: Oxenbourne House (formerly Upper House Farm), Lythe House, Hill Hampton, Parsonage Barn and Upper Parsonage Barn.

## Barns

The most dominant building in any farmyard was the barn and it is also the most likely to have survived to the present day, where its smaller cousins were often swept aside to make way for the large sheds which can house the giant machinery of today's agriculture. Four of our Oxenbourne farms still have their barn buildings, in different forms and states of preservation. Parsonage Barn was incorporated into a modern house in the 1990s; the barn at Oxenbourne House was recently restored by its owners for their private use; Upper Parsonage Barn was restored in 2002 as a tea room and venue for events; the fourth, at Lythe House, was rescued from delapidation in the 1980s. Appendix 2 has photographs of the restoration work at Lythe House and Upper Parsonage barns, and of the conversion of Parsonage Barn.

As we have seen, from the Middle Ages, barns served two different purposes. Most ecclesiastical 'corporations', including the diocese of Winchester, not only owned the lands but were rectors of their parishes and built barns on their granges for the collection of the tithes of grain harvested by their tenant farmers<sup>xxix</sup>. Grain grown in demesne was stored in 'manorial' barns, of which the barn at the Court House is a 17<sup>th</sup> century example (*fig 31*); tenant farmers also had barns for the nine-tenths of their harvest not made over to the diocese.



*Fig 31 The manorial barn at The Court House, rebuilt in the 17<sup>th</sup> century*

As also described, after the Restoration, wealthy and mostly absent landlords who had acquired the majority of farm lands in East Meon set about purchasing from the diocese the rights to rectorial, or 'greater', tithes due to the diocese. The four Oxenbourne barns were built in the 'long eighteenth century' which started just before 1700 and ended in the early 1800s (*figs 32 – 35*). The two named 'Parsonage'

may have replaced diocesan tithe barns (but see pp 43 & 44) and it can be assumed that the new landlords continued to collect the grain to which their agreements entitled them.



*Fig 32 Parsonage Barn, a house built around the frame of a 17<sup>th</sup> century barn. It was 25 metres long, 9.3 metres wide and had two sets of doors..*



*Fig 33 Upper Parsonage Barn, built c 1700, a 5-bay barn with central doors, 21.5 metres long, 8.5 metres wide, 5.2 metres high*



*Fig 34 Oxenbourne House barn, c 1700, restored by its current owners. It is 12.8 metres long, 5.5 metres wide and has five bays*



*Fig 35 Lythe House barn, built c1800, was rescued from dilapidation in the 1960s. the current building is 12.8 metres long, 7 m. wide*

The most striking characteristic of most barns is their size; not only long and wide, they are very high. The largest of our barns, Parsonage and Upper Parsonage, measure over 20 metres long, 9 metres wide, and over 5 metres high; Parsonage Barn had seven bays and two sets of doors, the others had five bays and central doors. Corn was stored on the stalk until it was threshed, usually in the winter and possibly not until after Christmas. After threshing, the corn was winnowed, using the draught created by the opposing open barn doors to separate the grain from the dust and chaff; the heaviest (and best) grains were thrown furthest, the light tailings which fell nearest the threshers feet being fed to the animals<sup>xxx</sup>.



*Fig 36 South entrance to Oxenbourne House barn*



*Fig 37 North entrance to Upper Parsonage Barn*



*Fig 38 Double entrances to Parsonage Barn, reproduced in the new house*



*Fig 39 Aerial photograph of Lythe House barn before collapse and restoration*

The barn entrances were wide enough to admit a loaded waggon and all had porches to protect loads from bad weather. By 1700, most barns had doors on both sides, so that carts could come and leave.

Some, as Parsonage Barn, had two sets of doors (*fig 38*). Planks were often slotted into the bottom of the doorways to prevent hens wandering in and corn flying out during threshing. The floors needed to be very clean (the threshers wore slippers) and were often made of one-inch thick planks.



*Fig 40 Diagram by Tricia Blakstad of Upper Parsonage Barn, showing key elements of the structure. To each side of the central frame were aisles providing extra storage space.*

In the Middle Ages, most barns were built from oak, readily available in Hampshire, and this continued to be the principal material into the 18<sup>th</sup> century.

The main frames of posts, beams and braces were first erected at the carpenter's workshop, then laid out on the ground; roman numerals were carved into the sides of sections, to help assembly when the frame was erected in situ (figs 41,42). The



*Fig 41 & 42 Masons' marks on posts and braces at Parsonage Barn*

walls were erected first, and each roof truss was then raised into position.



*Fig 43 Convex braces at Upper Parsonage Farm*

Dating farm buildings is problematic because beams and bricks from earlier barns were widely re-used, but Oxenbourne House and Upper Parsonage barns have traces of timber framing, which became less common as the 18<sup>th</sup> century proceeded; further evidence comes from early hand-made bricks in the plinths and courses on which the timber frames were erected, and from the use of convex braces (*fig 43*). Three of our Oxenbourne barns were built around 1700 and the fourth, Lythe House, c1800.

Although aisles, like those at Forge Sound and Riverside, had disappeared from dwellings by 1700, they were common in Hampshire barns where they provided additional storage space and sometimes housed animals: the pitched roofs of all our barns sloped beyond the framework of the central arcade to form aisles on one or both sides (*figs 44 - 46*). Purlins had been introduced in medieval barns to provide longitudinal support; collar purlin and crown post roofs were still used for aisled barns<sup>xxxii</sup>. Aisled barns often had projecting canopies to protect the threshing from rain and to allow the last wagon to remain overnight under cover, to be unloaded the next morning.



*Fig 44 Upper Parsonage barn showing central arcade and aisles*



*Fig 45 Lythe House barn, with aisle on far side; slots on the outside of near-side posts indicate that there was originally a second aisle*



*Fig 46 Aisle and west door of Oxenbourne House barn*



## Farm Buildings in East Meon, June 20<sup>th</sup> 2019

boxes, or foaling pens, were used for sick horses, and pregnant mares, or to give riding horses more room to stretch their legs (figs 55, 56)<sup>xxxiv</sup>. Floors were made of stone to make cleaning easier (fig 51). The carter's day started at 5.00am with mucking out, feeding and harnessing the plough team.

Oxenbourne House and Lythe House both have stables whose roof timbers are machine-cut and more slender than hand-sawn beams, indicating construction in the 19<sup>th</sup> or 20<sup>th</sup> centuries (figs 54 & 61); the stable roof at Oxenbourne House has replaced an earlier one following a fire, a common reason for later roof-work.



*Figs 52 & 53 Oxenbourne House stables*



*Figs 54 & 55 Oxenbourne House stables, ceiling and stalls*



*Figs 56 & 57, Oxenbourne house loose box/foaling pen and stone floor with guttering*



*Figs 58 & 59 Lythe House stable before restoration, and the stable building today*



Fig 60 East wall of Lythe House stable



Fig 61 Lythe House stable ceiling timbers

### Granaries



Fig 62 Granary on staddle stones at Hill Hampton Farm

Cereal-producing farms needed separate storage buildings for the threshed grain. In the corn-growing south of England free-standing granaries were built from the fifteenth century, not only to store corn for sale but also for seed or fodder which also needed to be kept out of reach of vermin, especially rats. Granaries needed to be well ventilated and their walls sealed against infestation by insects. They were therefore raised on mushroom-shaped staddle stones, had removable steps, and the floors inside were made of seasoned and fitted planks. Granary doors often had cat holes enabling the farm cat to catch rodents<sup>xxxv</sup>.

The interior was plastered or timber lined with a boarded floor. Because of their comparatively small size and because the staddle stones are valued as decorative garden features, granaries have been particularly vulnerable to neglect, demolition and salvage. The granary at our fifth farm, Hill Hampton, *fig 62*, is a relatively recent construction, but on staddle stones to the classical design.

### Cowhouses

In the early modern period, according to Eric Kerridge, ‘the cows were the least considered of all the livestock’<sup>xxxvi</sup>. Most farmers kept some cows, usually Herefords, with up to half a dozen in milk, and made some pale-coloured butter and cheese, but dairy produce had largely to be bought far afield. They fed the stubble field side-by-side with the sheep and after the hay was cut they had exclusive use of water-meadows until October or November, when they went into the yards. Here they fed chiefly on straw, which barely sustained them. ‘Everything on the farm was done, so to speak, to please the sheep.’

As noted, the Winchester Pipe Rolls refer in the Middle Ages to cowhouses in East Meon; they were widely used on large estates but did not become common on lesser farms until after the 1780s. Until then, most cows had been folded, like sheep, within mobile hurdle enclosures. The reasons for bringing cattle indoors were, firstly, the damage caused to winter pastures (especially on clay soils) by the hooves of wandering cattle, and, secondly, the convenience of collecting manure from housed cattle to be distributed over arable fields. William Cobbett wrote in 1821, in ‘Cottage Economy’, that a cow left outdoors would have half the yield of one housed indoors.



Fig 63 William Cobbett, 1763 - 1835  
member of parliament, farmer, and  
pamphleteer.

Cobbett (*fig 63*), himself a Hampshire farmer, suggested that the meanest of farmers should keep a cow or two: “And what a *produce* is that of a cow! To pretend to tell a country labourer how to build a shed for a cow, how to stick it up against the end of his house, or to make it an independent erection; or to dwell on the materials, where poles, rods, wattles, rushes, furze, heath and cooper-chips are all to be gained by him for nothing or next to nothing, would be useless ... The warmer the shed is, the better it is. The floor should *slope*, but not too much. There are stones, of some sort or another, every-where, and about six wheel-barrow-fulls will *pave* the shed ... a broad trough, or box, fixed to the head of the cow, is the thing to give her food in<sup>xxxvii</sup>.”

In larger farms, the cowhouse, also known as a ‘byre’, had a lower and wider door and rougher beams than the barn. Cows needed a constant supply of water, provided by a farmyard pond. Cows were either tied to stakes or restrained in stalls by wooden clamps. As with horses, loose boxes were used to house sick cows and bulls, or for fattening cattle and in some cow-houses, as in stables, there were haylofts above the stalls. Cattle were sometimes housed in the aisles of large barns.



Figs 64 & 65 Lythe House cowhouse under reconstruction in 1980s



Figs 66 & 67 Lythe House cowhouse converted into rental accommodation

### Cartsheds



Fig 68 Cartshed at Lower Farm, entrance angled to avoid sunshine

With increased yields came surplus produce which could be sold in nearby towns. Wagons previously used by carriers were taken up by farmers in the late 16<sup>th</sup> and early 17<sup>th</sup> centuries. Into the 18<sup>th</sup> century; tumbrels, carts and wains were equipped with iron tyres and binding and needed to be sheltered.<sup>xxxviii</sup> New types of plough had also come into use, notably a long, heavy, two-wheeled plough which

suit the chalky, gravelly and flinty soils of the downlands. Along with harrows and other large mechanisms, these were usually stored in north-facing cartsheds because, in the words of Gervase Markham in 1614 ‘the sun does more harm to a cart than either wind or rain’<sup>xxxix</sup>.

### Sheep pens

Sheep had grazed the hills and created downland pasture for thousands of years. Chalky soils suited both grass and sheep and grass was sweeter when it was nibbled short. The most common breed was the ‘Hampshire’, otherwise known as ‘Western’ or ‘Wiltshire’, a big, hardy animal with a light frame; it could walk easily up and down steep hills. These sheep were ‘folded’ into temporary enclosures made of wattle hurdle and constantly moved on both to prevent over-grazing of pasture and to distribute the manure. In the words of Eric Kerridge, ‘The sheep-fold was the sheet-anchor of husbandry, and the primary purpose of keeping sheep was the dung of the fold, wool being only a secondary consideration<sup>xl</sup>.’

Following Enclosure, wealthy farmers had private flocks and their pastures able to carry between 400 and 1,400 sheep ... the kind of numbers needed for close-folding the arable. Less well off farmers with only a few sheep could not fold their arable and it was not worth their while to employ a shepherd. Barley needed no other manure than was produced by folding while wheat fields needed to be supplemented by dung carts in summer. Sheep manure was its best in the spring and it was usual to fold the wheat field from harvest time until about mid-October, when the flock was sometimes withdrawn to the downs for a month. Then the sheep-folds were moved to the fallow barley fields and stayed there until early May, when they passed to the summer fields.



Fig 69. Sheep hut, left, in 15<sup>th</sup> century France

Sheep required no buildings. The great sheep shearings of spring time, the most important communal event after the harvest, were often performed in barns, and lambing was conducted in any available cow house or shed. Shepherds had slept and kept provisions and medicines in wheeled cabins since the Middle Ages, as was illustrated in illuminated manuscripts (*fig 69*); shepherds' huts were common on the downlands.

East Meon resident Jim Cook has contributed records of his grandfather John Cook, who was shepherd to Colonel LeRoy Lewis of Westbury House at the beginning of the 20<sup>th</sup> century and in the 1920s to Henry Berry of Oxenbourne Farm; Jim has restored his grandfather's wheeled hut.



Fig 70. Jim Cook's grandfather John was a shepherd at Oxenbourne Farm in the 1920s

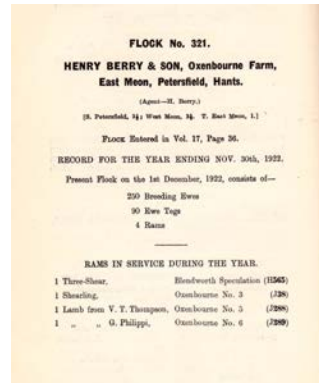


Fig 71. Flock records for Henry Berry of Oxenbourne Farm, 1926



Figs 72 & 73 Shepherd's hut used by John Cook at Westbury Manor farm, restored by Jim Cook



Fig 74 Inscription in the hut, recording owner of Westbury House, Col Le Roy Lewis



Fig 75, Signature of John Cook

### Brewhouses

“To have a house and not to brew was a rare thing indeed ...” wrote William Cobbett in 1821; he could have been writing about East Meon at any time in the previous 800 years. Water was not safe to drink, and even children drank ‘small beer’. Mention has been made of services, such as the dairy and bake-house, which were incorporated into the main farmhouse; most farms also had a backhouse with brewing equipment. Barley had been a staple crop but hops did not arrive in the British Isles until the fifteenth century; Langrish and neighbouring Buriton had hop fields in the 19<sup>th</sup> century and East Meon men and women went hop-picking in Buriton into the 20<sup>th</sup>. Before the onset of scientific and industrial brewing in the 19<sup>th</sup> century most farmyards had malthouses<sup>xli</sup>. The brew was steeped in a cistern for at least two days: plenty of floor space was



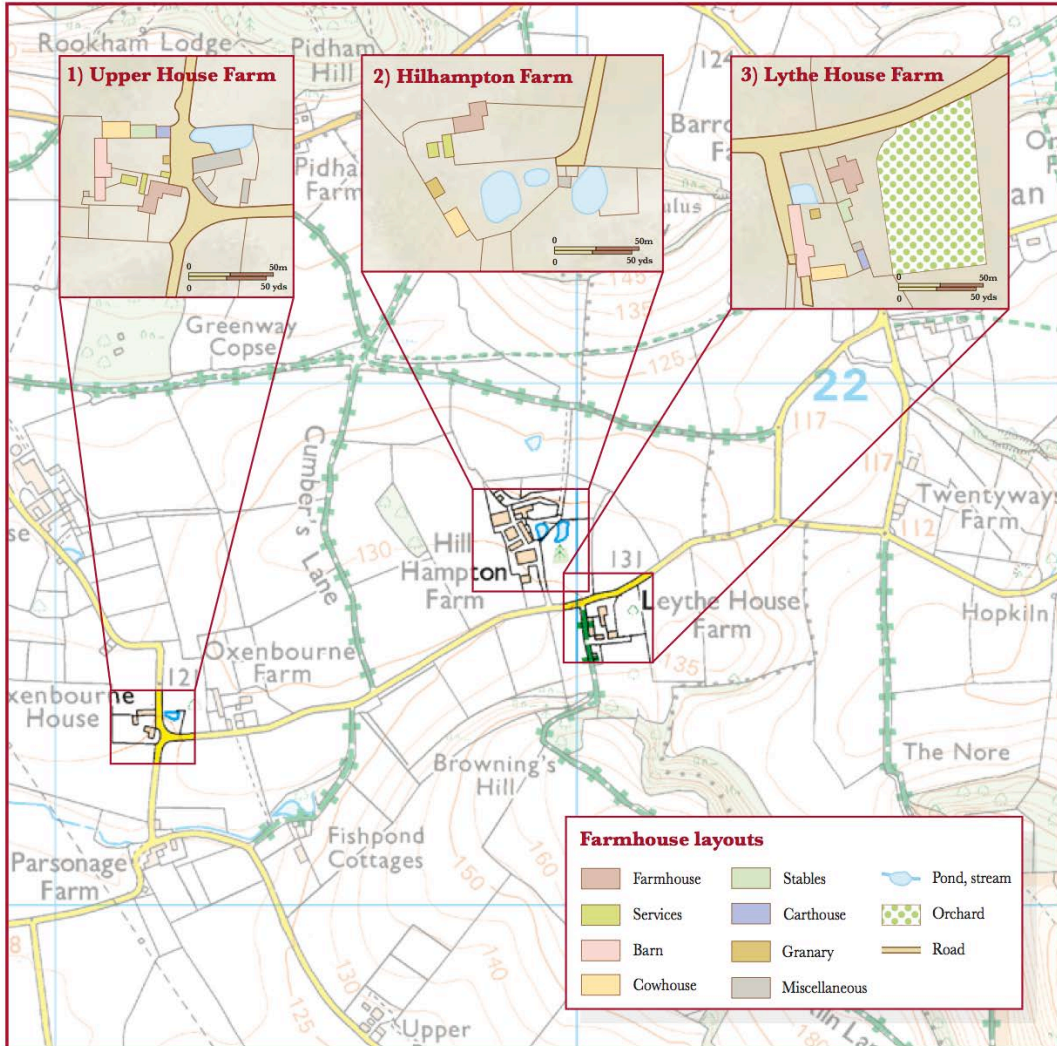
Fig 76, 18<sup>th</sup> century farm brewhouse

needed for the next operation when the barley was left to germinate on a timber or lime plaster floor; once the grain sprouted, the malted grain was dried or heated on a kiln floor of brick or tile. The malt was then ground, mashed and brewed to make beer. Like the making of butter, cheese and bread, it was work for the women of the household: as Cobbett also wrote: “The putting of beer into barrel is not more than an hour’s work for a servant woman, or a tradesman’s or a farmer’s wife. There is no work too heavy for a woman in any part of the business.” (Fig 76)

### Farmsteads

‘The farmstead may be defined as the farm buildings and house looked at as a group’<sup>xlii</sup>. Following enclosures like those in Oxenbourne in 1661, farms of more than 150 acres became common; extra accommodation was needed for both corn and stock and it was now considered important to bring cows under cover; sheds were built against the side of the barn, or as a separate range along another side of the yard. Thomas Harrison noted in 1577 that farmsteads in the wealthier south and east were often built around courtyards which were suited to the efficient production of manure, which was kept in the fold-yard or dungpit and then forked into carts and spread over the fields. It had been proved that manure kept twice its value if cattle were left in covered yards with gutters; left in the open, straw and manure would be quickly soaked and diluted.<sup>xliii</sup>

Map 7 on the next page shows the layout of the three farms we have analysed, of which Oxenbourne House/Upper House Farm and Lythe House are courtyard farms originating in the 17<sup>th</sup> century; Hill Hampton has an ‘L’ layout, reflecting its concentration on dairy farming in the 19<sup>th</sup> and 20<sup>th</sup> centuries.



Map 7 Location and layouts of three Oxenbourne farms. Upper Parsonage Barn is on higher ground, further along Harvesting Lane, bottom right of this map



Map 8 Tithe Apportionment map of Upper House Farm, 1852, showing courtyard layout

The farm at Oxenbourne House, originally known as Upper House, started with a small farmhouse, built in the 17<sup>th</sup> century, which grew to include services as dairy, bakery, and probably a brewhouse (*map 8*). A barn was then built at right angles to the farmhouse, enclosing the west end of the courtyard at right angles to the farmhouse; the present barn was built c1700. At right angles again, a cowshed and stables were



Map 9 TA map of Leythe House Farm, also with courtyard layout

built along the north side, facing the farmhouse, and a cartshed next to a lane leading to Ramsdean which dissected the yard on the eastern side. Beyond it were the farm pond and other buildings of which only the foundations survive today. A granary stood in the yard on the farmhouse side of the lane. Lythe (Leythe) House farmstead was also a courtyard, with a freestanding granary, a barn on the western side, cowsheds next to it on the south side, and a cartshed and stable to the east (map 9).

As the population of England grew during the 17<sup>th</sup> and 18<sup>th</sup> centuries, especially in towns and cities, farming practices in the chalk downlands continued to develop. Large estates expanded still further and converted more land to arable. In the 19<sup>th</sup> century, small farmsteads typically comprised a farmhouse with one or two multi-functional out-buildings. Larger farms had a greater range of buildings dispersed around the yard, and L-shaped plans appeared as at Hill Hampton, our fifth Oxenbourne farm.

### Hill Hampton

Although we have records of a farm at Hill Hampton (as it is currently spelled) dating back to the thirteenth century, the house we see today was built at the end of the eighteenth century, clad in local malmstone (*fig 77*). The tenant was probably Dr Edward Bentham, Dean of Christchurch College in Oxford, who died in 1776, or his widow who inherited the estate<sup>xliv</sup>. We don't know whether the cost of the handsome new building was met by the overall landowner, Magdalen College, or by the Benthams: either way, their motive was to raise the rental charged to its occupants. This was a golden period for farmers; between 1750 and 1790 corn prices rose strongly and rents trebled. The new house incorporated some of the features of the earlier, traditional, farmhouse; it has a central chimney and two hearths, on the eastern side serving the parlour of the farmer's family and on the western side the kitchen in which the whole household would have cooked and eaten (*fig 79*). There was an extra wing to the north-east of the main house, possibly to accommodate a separate family (*fig 78*).



*Fig 77 Hill Hampton farmhouse from the south, Georgian, built of malmstone*



*Fig 78 The north- eastern extension*



*Fig 79. Kitchen Fireplace*



*Map 10. Tithe Apportionment map of Hillhampton Farm in 1852.*

The service areas to the west of the farmhouse extended towards the farmyard (*map 10*); there were two ponds to the south east, one higher than the other, with a stream running between the two; there are traces of what might have been a form of water-mill building between them. We shall return to a more detailed description of Hill Hampton in the twentieth century.

### **The Industrial Revolution**

The late eighteenth and early nineteenth century saw the introduction of new techniques and machinery to agriculture, changing with it the social structure of farming and the design of buildings. Irrigation was improved by the introduction of mass-produced clay pipes and mechanisation brought seed drills, harrows and ploughs, horse hoes and clod crushers were now mechanical. After 1820 there were a number of patents relating to steam machinery for cultivation and in 1858 the first ‘portable steam engine’ dragged a wheel plough to and fro across a field<sup>xlv</sup>.



Fig 80 18<sup>th</sup> century horse threshing machine

From the 1770s, the threshing process had been progressively mechanised, mostly driven by horsepower (*Fig 80*): farmers were quick to mechanise and distinctive wheel houses were built in which horses pulled great overhead crown wheels providing power to barn machinery.

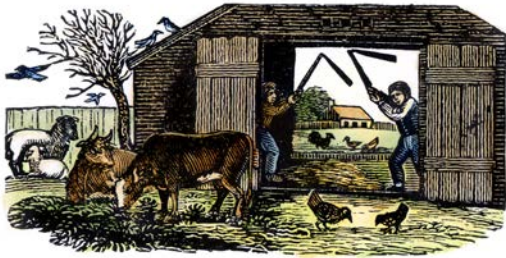


Fig 81 Threshing by hand

Farm labourers protested against the introduction of machinery which did their work more cheaply and deprived them of jobs; in the early nineteenth century, Swing Riots took their name from the hand flails traditionally used (*Fig 81*). They came perilously close to East Meon, one of whose landowners, John Bonham Carter, was a Petersfield JP; he was asked in 1830 to send reinforcements to nearby

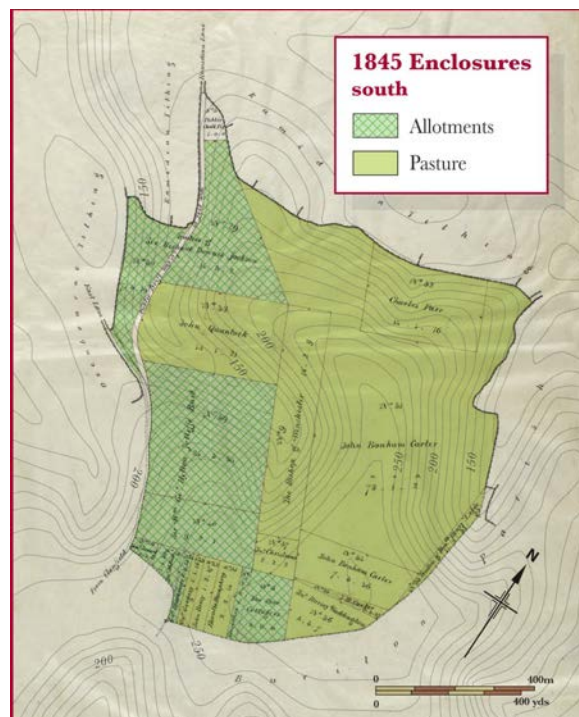
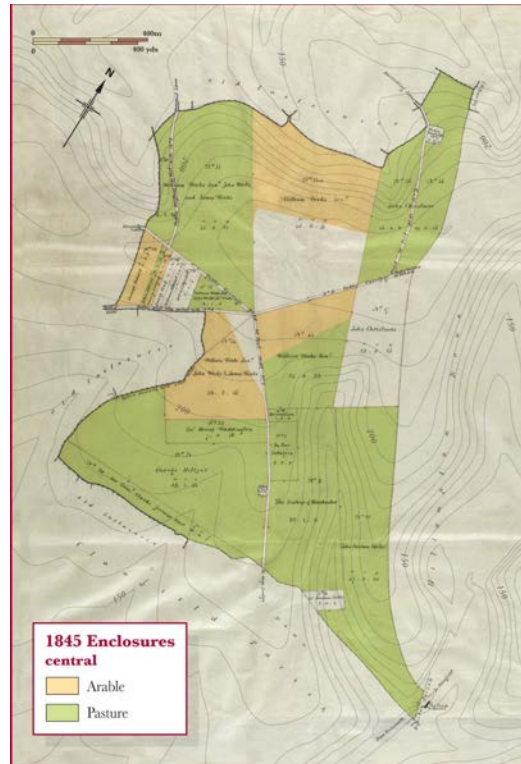
Selbourne and Greatham to quell Swing Riots. He also presided over the subsequent trials and committed the rioters to gaol<sup>xlvi</sup>.

Chemistry brought new forms of fertiliser, and by the 1830s farmers were fertilising soils with chalk and lime, clay, marl, salt, soot, hoofs and *shoddy* - chopped woollen rag. Lythe House is on Lime Kiln Lane, named after a kiln just to the south. A radical innovation was bone, and in November 1822 the Manchester Guardian reported that 'more than a million bushels of human and inhuman bones' had been shipped during the previous year to the port of Hull. By 1855, nitrate of soda was being used as a fertiliser and in the same year a Liverpool merchant traded the first cargo of Peruvian guano ...

The Swing Riots had been quelled, and improved agricultural techniques inevitably meant that farmers could produce more with less labour. Their appetite for more land led to a new flood of enclosures.

### Enclosure by Act of Parliament

In the eighteenth and nineteenth centuries, 6.8 million acres of English land were enclosed by no fewer than 4,000 Acts of Parliament. Two of these allocated land in East Meon; Oxenbourne was the subject of the first of these, in 1845<sup>xlvi</sup>.



Maps 11 – 13 Oxenbourne Enclosures, 1845, north to south.

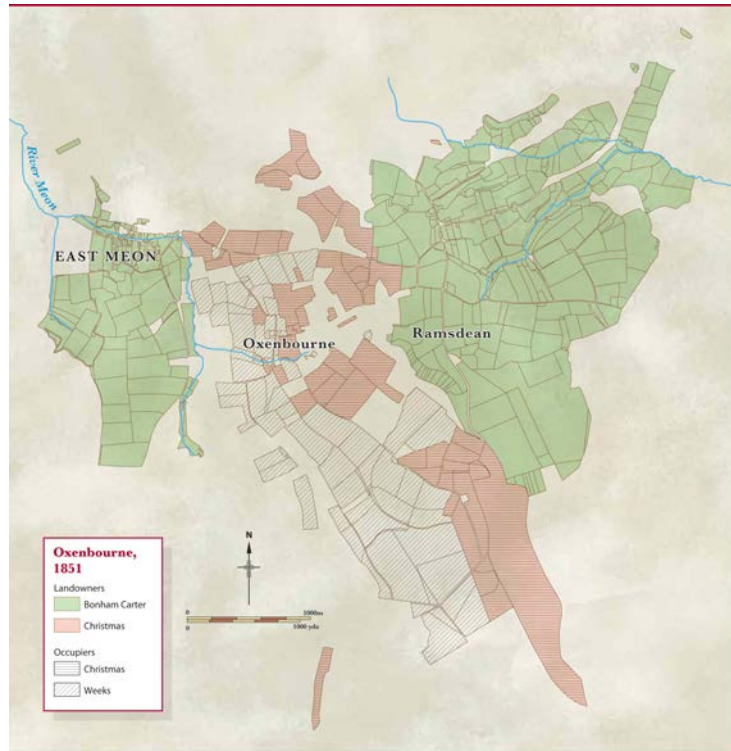
Both downland pasture and arable open fields were enclosed and the largest parcels of land were allotted to wealthy landlords like John Bonham Carter, Sir William Hylton Joliffe, William Weeks and John Christmas, or retained by the Diocese. Closer to East Meon village (*Map 12*), strips of land were allotted to wealthy residents for whom farming was a secondary occupation, including the doctor, George Pink, shopkeeper John Nathaniel Atkins, miller John Lillywhite; these were ‘allotments’ in the modern sense, on which these men may well have grown vegetables and fruit for their own consumption. Lesser farmers such as Blackmore, Berry and Humphrey were allotted smaller strips to the south of the tithing (*map 13*).

#### *Oxenbourn Fuel and Recreation Ground Allotments Charity*

To alleviate the plight of poor farmers who had been forced off their land, two “*allotments or parcels of land on Oxenbourn Down*” were awarded “*for the growth of furze and fuel to be cut and used by the occupiers of small cottages not exceeding the annual value of four pounds*”, and a second strip “*for purposes of exercise and recreation of the neighbouring population.*” The Oxenbourn Fuel and Recreation Ground Allotments Charity was formed to administer these allotments; it was also responsible for what is now the Recreation Ground in East Meon village on which cricket is played.

A second Act in 1857 enforced further enclosures in the parish of East Meon, this time mainly in Langrish, Stroud and Ramsdean, to the north of Oxenbourne. Joliffe and Bonham Carter are the main beneficiaries, and there is an emphasis on building and maintaining access roads. Following this spate of enclosures, fields became larger and squarer; on small farms they were usually five to ten acres in size and on larger ones, up to 50 – 60 acres. Enclosure was an expensive business not only because of heavy legal fees, which worked out at average of about £1 an acre, but also the costs of making hundreds of yards of fences and new roads. Only the rich could afford these costs and the number of farmers was further reduced to a fraction of the number there had been in the mediaeval or Tudor village<sup>xlviii</sup>.

## John Christmas, father and son



Map 14. Landowners and occupiers in Oxenbourne and neighbouring tithings recorded in the Tithe Apportionments, 1852. John Christmas both owned and farmed the most land in Oxenbourne, with William Weeks the second biggest farmer.

While most of the new landowners were gentlemen of wealthy families who lived outside the parish, John Christmas, father and son, were of yeoman stock who had originally lived in nearby Selbourne but now lived in Oxenbourne. An indenture records the sale in 1790 by the Bishop of Winchester of the greater tithings of land in Oxenbourne to *John Christmas of Hilhampton*; he died in 1805. The younger John is listed in the Tithe Apportionments of 1852 as ‘occupying’ both Hilhampton and Oxenbourne Farms, and at different times he lived in both. He expanded the estate to 726 acres, was a churchwarden of All Saints and when he died in 1876 was designated a ‘gentleman’; he had no family and his lands were acquired by John Bonham Carter. More detail about the two John Christmasses is available in a separate EMHG report, ‘*Oxenbourne Tithing*’<sup>xlix</sup>.

## The Victorian farmhouse



*Figs 82 Lythe House: only these beams remain from the 17<sup>th</sup> century structure*



*Fig 83 The 19<sup>th</sup> century farmhouse overlooking formal gardens*



*Fig 84. The farmyard of Lythe House, stable and carhouse, at the back of the farmhouse*

In Victorian times, 90% of farmers were still tenants. Landowners were responsible for long-term investment such as buildings while their tenants used their working capital to buy stock, seed and equipment; they could not afford to spend it on buying land. Leases tended to be short-term, and the tenants had few rights. With increased prosperity came a new fashion in farmhouses which, up to now, had overlooked the farmyards and service areas (dairy, brewery, bakery &c). Farmers now saw themselves as the equal of city burghers and converted or built their houses with their backs turned on the working farm; their families withdrew into ornate parlours often boasting a piano amid the soft furnishings<sup>l</sup>. The original Lythe House, for instance, had been built in the seventeenth century<sup>li</sup>; by the mid 19<sup>th</sup> century it had grown from the original farm household building, of which only a few beams now remain (*Fig 82*) into a substantial 19<sup>th</sup> century house with its back to the farmyard and its private rooms looking north out over a formal garden and the road (*Fig 83*). The farmyard was now behind, and largely out of sight, of the house (*fig 84*).

In 1906, the estate of John Bonham Carter, including Upper House Farm (Oxenbourne House) was bought by Lord Hotham. The farmhouse is described in the sales particulars as ‘*a desirable small holding, a well-built brick stone and tile residence containing 3 sitting rooms, kitchen, pantry, larder and cellar with 5 bedrooms and garden, a timber and thatch cart house and a timber and slate granary*’. It, too, had been enlarged.

### Agricultural recession.

The so-called 'golden age' of farming ended in 1875; the weather deteriorated and there was a succession of bad harvests, culminating in a particularly wet summer in 1879. Free trade and improved ship transport opened the home market to imports of cheap corn, especially from the USA<sup>lii</sup>. East Meon farmers had come to rely on the traditional combination of corn and sheep and when corn harvests failed, they sold off their sheep: corn-growing land, no longer adequately fertilised, gave lower yield and this caused a chain reaction<sup>liii</sup>. Many were driven out of business, land rents plummeted and labourers were laid off. Many migrated, taking advantage of railways to travel to the rapidly expanding cities: between 1876 and 1911, the number of people working in agriculture in England nearly halved.



*Fig 85 Five doorways at Barnards Corner at the turn of the century; there are three today*

For those who remained in East Meon, work was scarce; many houses were divided into smaller units to accommodate poorer families. (The two smaller houses at Barnards Corner, *fig 85*, were divided into four, with families of up to fifteen in each.) Farms and farmhouses fell vacant and landlords reduced their rents.

### The country house

Despite this depressing reality, urban Victorians were fed a romantic vision of rural life, for example in the paintings of Helen Allingham who in 1874 illustrated Thomas Hardy's novels with sentimental images of thatched cottages and picturesque gardens (*fig 86*). This love affair with the country led professional families to buy vacant farmhouses and convert them into weekend retreats; the railway, and the undemanding schedules of wealthy businessmen, meant some could even commute daily to London.



*Fig 86 A Cottage with Sunflowers by Helen Allingham*

In 1897, Magdalen College sold its holdings in Oxenbourne to a Portsmouth businessman. Only a handful of farmers remained, notably the Weeks family in Lower House Farm (strictly speaking, in Ramsdean) and the Berry family in Oxenbourne Farm. The 1891 census shows that the farmhouse at Hilhampton had been divided into three, occupied by three farm servants and their families along with a boarder. Upper House Farm (as it was still named) was occupied by a farm servant with five children and one grandson, two of the sons listed as agricultural labourer and carter boy.

## The twentieth century

By the end of the nineteenth century, of our five farms, only Lythe House was occupied by a working farmer, Richard Harrison, from Middlesex, with his wife, four children and two servants; in Kelly's Directory of 1898/9 he is described as a farmer and landowner; by 1901 he had departed<sup>liv</sup> and Lythe House was then occupied by Gerald Kingsbury, 29 years old, born in London who described himself in the census as a farmer; it is unlikely he was hands-on - his wealth is shown by his donations to the refurbishment in 1904 of All Saints' Church by Sir Ninian Comper; he also dedicated a Litany Desk and Fauldstool to the memory of his older brother who died that year. Ten years later, the census shows Arthur Broadway occupying Lythe House: he was a working farmer who tragically lost his son, Norton, at the Battle of Vierstraat Ridge in Belgium on September 1918; two other East Meon men were killed on the same day in the same action<sup>lv</sup>.

In the early twentieth century, East Meon farming was re-invigorated by farmers from Cumberland, who took advantage of the low rents on offer and shipped their entire farm household including animals by train to Petersfield: their story is told at <http://www.eastmeonhistory.net/the-cumbrian-migration/>. The Atkinson family from Westmorland rented South Farm and began a successful campaign to re-introduce mixed farming and, eventually, to buy out the tenancy. Their efficiency enabled the Atkinsons to farm increasing areas of land with fewer men and less machinery, and former farmhouses were increasingly gentrified.

### *Oxenbourne House*

The 1911 census shows that Thornton Hassell, a retired bank manager, lived at Upper House Farm with his wife, his 85-year-old mother and two domestic servants. At some point in the following decade, it became Oxenbourne House; Kelly's Directory of 1921 shows Thornton Hassell among the 'gentlemen' of East Meon, as the resident of Oxenbourne House. Presumably, therefore, it was Hassell who engaged Geoffrey Lupton to refurbish the farmhouse in the Arts and Crafts style. (Lupton was one of the original pupils at Bedales School, and later returned to set up a furniture-making workshop on Cockshott Lane in Froxfield, and who built the iconic Red House, also on Cockshott Lane, for the poet Edward Thomas. Lupton took over after the death of Ernest Gimson the building of the iconic Library at Bedales School and Lupton Hall). In the 1920s, Lupton's friend and associate Edward Barnsley took over his workshop and one of these two produced the woodwork at Oxenbourne House, notably the handsome staircase as well as the wooden pillars supporting the South Gable. Oxenbourne House at the time was owned by Robert and Lady Peel, who had built a substantial country house at Leydene and bought large tracts of East Meon; it is not clear who paid for the work on the house. In 1953 the house was bought from Lady Peel's estate by Sir Dymoke White, of Timothy White the chemists, who passed it on to his son Sir Lynton White in 1968; its role as a country house now fully established, and its farm buildings well preserved but not for agricultural purposes.

## Farm Buildings in East Meon, June 20<sup>th</sup> 2019



Figs 87 & 88. Photographs from *Leydene Estate Sale, 1953* Now named *Oxenbourne House*, it had been substantially altered by *Geoffrey Lupton*, a prominent member of the *Arts and Crafts movement*.

### Dairy farming

Between the two world wars, dairy farming boomed in the valley. Easy access by road and rail to the cities of Portsmouth, Southampton and London and mechanization of milking and refrigeration in the dairy led to a proliferation of dairy farms in the Valley. The buildings at two farms, Hill Hampton and Garston, illustrate 20<sup>th</sup> century dairy farming.

#### Hill Hampton dairy farm

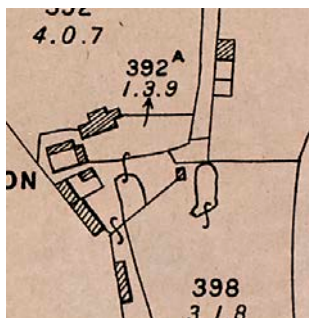


Fig 89 *Richard Jones with staddle stone from Hill Hampton*

Hill Hampton had been bought in 1918 by George Edward Jones, who had previously worked at a dairy farm in Exton, making cheese; his son Stanley Eli left an account of his father's acquisition and development as a dairy farm (*Appendix 3*). The third generation continued the tradition, and in 2017 his grandson, Richard Jones, described how his father developed the dairy business; the *Appendix 3* also has a transcript of the interview. Richard (*fig 89*) remembers that that his father was given 'a herd of 43 cows, plus young stock, payment for all his years of working with his father'.

They ended up with 'a herd of 150 cows all of them pedigree; we used to rear 30 or 40 heiffers every year and at one time we were sending those over to the continent as down-calving heiffers; there was quite a trade of quality Friesians going over to Europe'.

Richard took over the farm in 1969; he recorded a guide to the buildings in which his family housed the dairy herd and working horses, built or refurbished during their period of ownership:



Map 15 *Hill Hampton farm from 1953 sales particulars*

## Farm Buildings in East Meon, June 20<sup>th</sup> 2019

“First, as you approach from the south, there was a calf shed, in bad repair, which we replaced with modern building. Then came the granary, on staddle stones, (*Fig 62*) which is still there today, where we used to keep poultry, pig and sheep feeds, to be made into pellets or nuts, kept in bags and stacked against the sides.

After the granary, there was a gap to the left, leading to the rickyard; the turkeys were kept here. The next buildings (*fig 90*) had a stable, with four stalls plus a foaling box; there was a loft over it into which hay was forked up, then down into the racks for horses to feed. The other part of that building was a pen for cows, six on each side, with the loft over. Then, at the end of the block, came the cake house, a small room, where we mixed up the daily ration of feed. The first section of the next building (*fig 91*), with a lower roof, was a long pen for 15 cows, linked to an older section with a higher roof, which has the oldest timbers and had a calving pen (*Figs 92 & 3*). There were tie-ups on the wall for the cows, with their calves behind them; they were bucket-fed for six to eight weeks. Next to them was the brick dairy and engine room. The milk went to the dairy where it was cooled and poured into the churns.” “The warm water was pumped to the roof and then out to the pens to water the cows, which was better for them in winter.



*Fig 90 Stables and cowshed with cake house*



*Fig 91 Long pen for 15 cows*



*Figs 92 & 93 Hayloft over cow shed & old door to stable*

Next, where the car-ports are now (*fig 94*) was the bullpen which had a domed roof, 40' by 60', and held 10 cows, and a loose box; next to the farmhouse was another cow pen for 6 cows. In 1938 it had no electricity, no running water ...”

In 1989 Richard Jones sold Hillhampton in two lots; the house and most of the farm buildings, along with 10 acres of land, to Sasha and Nigel Brooks; the rest of the land was sold to Nick Bridger (the present owner) and Jim Brown, his stepfather-in-law, who subsequently built a new house to the south of the farm buildings.



*Fig 94 Car port, where a bullpen originally stood*

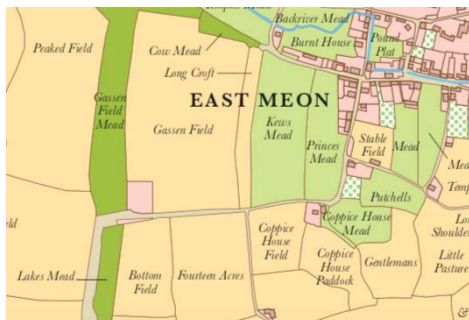


Fig 95. Farm buildings at Parsonage Farm, before they were replaced by the reconstructed barn which now occupies the site.

In the first half of the 20<sup>th</sup> century, local councils became the major builders of what Tinniswood describes as ‘mean little council houses’, adjacent to the farms, occupied by the men who worked there<sup>lvi</sup>. The recessions of the 1920s caused farmers to mechanise wherever possible and to lay off workers: farms became larger and methods of cultivation more efficient through innovations in agrichemicals, and more closely regulated. New farm buildings, on the other hand, have been largely exempted from planning restrictions and on working farms the original out-houses were replaced by large structures, clad in prefabricated materials, which could flexibly accommodate large machinery or animals (*Fig 95*). We have not included these buildings in our research.

#### *Garston barn*

Finally, a dilemma which draws together a number of themes from this study. Jane & Richard Brown, members of the History Group, live in Garston Farm, a converted farmhouse at the south-western edge of the village; they informed us that Garston Barn, which had been demolished, was known as a ‘tithe barn’. Could it have, indeed, been a tithe barn?



Map 16 1851 Tithe Apportionment map showing location of ‘Gassen’ barn



Map 17 O/S map c.1870 showing layout of Garston barn

We know that Garston Barn existed in 1851 since it is shown in the Tithe Apportionments, (*map 16*) and in the first O/S map of East Meon, c 1870 (*map 17*): the plan shows that it was indeed a large building, suggesting it might have been a tithe barn. In 1880 it was sold as part of Court Farm: tithe-free because the Diocese farmed it in demesne. It therefore stood on church lands, not far from the Court House, and we know there was a tithe barn in the curia in the middle ages, which collected rectorial tithes from other open fields.

Edward Roberts reports that ‘the bishopric pipe rolls pre-1500 show that *‘There were only three tithe barns in the manor of East Meon: one at the Courthouse and the others at Froxfield and Steep.’* He adds: *‘The one at Steep still survives as a fairly small 3-bay structure now converted into a house. So tithe barns did not have to be very big if the expected corn crop was not particularly large.’*

There is no evidence of a tithe barn at Garston before the Reformation; the 1567 diocesan survey and the parliamentary survey of 1647 carry no reference to ‘Garston’ or any of its variants. Since there are no remains of the barn itself, we are in the realms of guesswork: could it have been built post-Restoration, and if so, what was its function?

The same question relates to two 18<sup>th</sup> century barns built in Oxenbourne, both carrying the name ‘Parsonage’. Were they built to collect the greater tithes due to the bishops until the Tithe Commutation Act of 1836? This is unlikely, since the farmers who rented land from the diocese after the Restoration almost all bought indentures from the diocese which entitled them to the tithes on their own produce. Garston Barn may have been built to house the grain of post-Restoration farmers who rented Court Farm, and the two Parsonage barns may have received their names because they still rented their land from the church<sup>lvii</sup>.

#### **Garston Farm**



*Fig 96 Photograph of Garston Farm, 1960*

Long-standing villagers remember a large cowhouse, (*fig 96*) which was obviously not an early barn and was probably built in the 1930s, at a time when dairy farming was popular. The size and shape suggest that, like Parsonage Barn, it may have been built on the framework of a previous structure; if so, it had lost its large side doors, but would have been a double-aisled barn. Indirectly, Lady Peel re-enters the story. When she died in 1949, she left very little money or land to her three children, but in 1954 her daughter Lady Doris bought two farms from the estate, one of them Garston which went to her nephew Brian Blacker. It was then 360 acres and he kept a herd of 70 Ayrshire cows. Lady Peel’s great granddaughter Charlotte Duthie describes how: *‘he employed 7 men on a basic wage of £4. 15s a week, he had a herd of 70 Ayrshire*

*cows which were milked by hand in the dairy – everyone knows the dairy which was along the road there – lunch was at 12.30.* <sup>viii</sup>

In 1957, the Blackers moved into a new farmhouse which had been designed by Lionel, Lord Esher. His sister Lady Diana Cavendish wrote: *“my sister-in-law’s mother met him in the West Indies and thought he would be a suitable architect, she was rather a snob, and liked the idea of him being a Lord.”* Charlotte Duthie again: *“We kept the dairy herd right to the end, and I remember the milking by hand but I also remember a new dairy being installed:*



*Fig 97 The new farmhouse at Garston.*

*it was always breaking down. These things were put on the udders but, you know, ‘it’s not working!’. So, a lot of teething problems when they mechanised the milking. And then every day the milk was collected, when we first were there, in large steel churns put on a bench outside, a large bench outside the dairy ... it ended up being the Milk Marketing Board. The milk was warm and we used to lay it all out and up to the house in these churns and take it home, and we drank warm milk ...”*

Garston also produced *“sugar beet which was harvested and loaded onto trailers and driven to West Meon station where it was forked into railway carriages and taken to the nearest beet factory at Tavistock”*.

## Conclusion

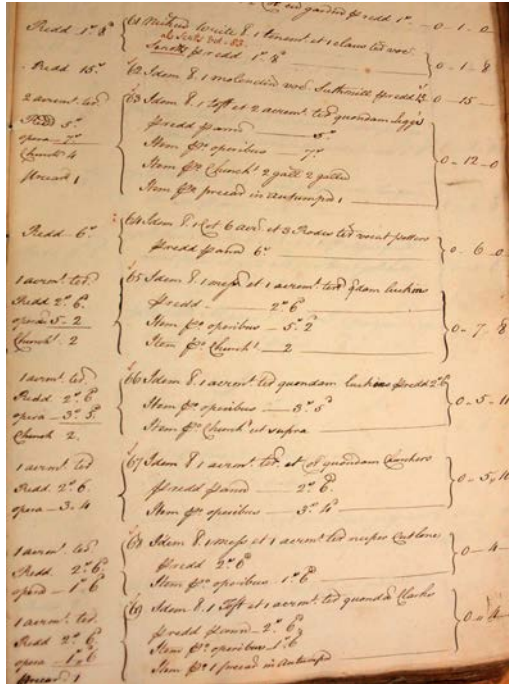
Of the five Oxenbourne ‘farms’ we have studied (two were not strictly farmsteads, but farm buildings) none is today occupied by a working farmer. When they restored Upper Parsonage Barn, Nick and Sue Atkinson built a house where the original barn had stood in isolation; Nick with his brother Matt and cousin George – all descendants of the Cumbrian migrants - farm a large area of East Meon. The present owners of Hill Hampton, Lythe House, Garston Farm and Oxenbourne House, and of the reconstructed Parsonage Barn, are professional or creative people who either commute to cities or work locally. The farmlands of Oxenbourne are cultivated by a handful of farmers, with very few farm workers and sophisticated machines. Fortunately, several of the original farm buildings have been preserved but none is used for the purpose for which it was built. This paper starts with the observation that farm buildings tend not to survive: we should be grateful that in East Meon so many have.



*The original maps in this report have been designed by David McCutcheon and funded by a grant from the Heritage Lottery Fund*

**Appendix 1 Lands rented by Nicholas Wright, 1567**

The Rental survey of 1567 has this entry for lands held by Nicholas Wright; this is a n 18<sup>th</sup> century transcript of the original document. Below are entries for his holdings other tithings.



Entries listing holdings of Nicholas Wright in East Meon tithing

61 1 tenement and 1 close of land called Senotts rental 1s 8d

62 1 mill called South Mill rental 15s

63 1 toft 1 acre once Legge's rental 12s

- Rental Pannage, 5s
- Labour (operibus) 7s
- Churchscot cock and hens
- Precar (work at harvest) autumn 1

64 1 cotland 6 acres 3 rods called Potters rental 6s

- 65 same owns 1 messuage and 1 acres formerly Luckins rental 7s 8d:
- Rent 2s 6d
- Labour 5s 2d
- Churchscot 2s

67 belonging to Churchers rental 5s 10d

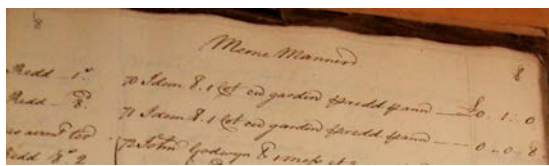
- Rental pannage 2s 6d
- Labour 3s 4d

68 1 messuage and 1 acre land above Cutlone rental 4s

- Rent 2s 6d
- Labour 1s 6d

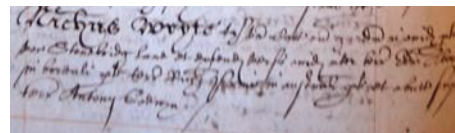
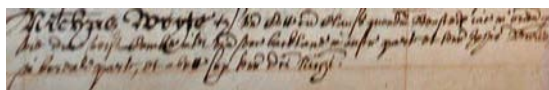
69 1 toft and 1 acre once Clarks rental 4s

- Rent 2s 6d
- Labour 1s 6d
- Labour in autumn



70 1 cottage and garden rent for pannage 1s

71 1 cottage and garden rental for pannage 8d



Lands held by Wright in Riplington and Oxenbourne (secretary hand)

## Appendix 2 The conservation of farm buildings in Oxenbourne

The restoration of buildings on three of our farms was recorded in photographs.

### *Lythe House Farm*

The five-bay barn at Lythe House farm was collapsing when Peter and Mirabel Brooks bought the house in the 1980s, and they recorded its restoration. An aerial photograph taken before the work started shows that the barn previously reached as far as the cowsheds, and had comprised five or more bays, of which at least one was subsequently demolished and the south wall recreated at the end of what is today a four-bay barn.



*Aerial view before restoration, looking south, showing barn on right touching the cow house*



*Lythe House barn before restoration work began*



*Four of the five bays of the barn, new farmyard entrance to the south.*



*The barn's south wall restored as it had originally been*



*Restoration of what were originally cow sheds into two rental bothies*





*Nearing completion*



*The bothies today*

### **Parsonage Barn**

Until the twentieth century, Parsonage ‘Farm’ was an assemblage of dwellings for farm labourers and some farm buildings, serving Upper House and Oxenbourne Farms. They included one of two which were probably tithe barns in Oxenbourne; its timber frame was later encased in modern cladding and in 1995 it was stripped down to the original structure, moved 30 metres, and converted into a substantial private house by Alan and Ceanna Collett who took photographs of the work in progress (*Figs 56 to 58*). Edward Roberts has dated the original woodwork to the ‘long 18<sup>th</sup> century’, 1680 – 1800, and in the course of the move builders found a coin dated 1695 in the foundations, presumably buried to mark the date of construction. It was a five-bay, two-entrance barn and the present house is built around the original framework.



*Modern farm buildings in 1995; the framework of Parsonage Barn was preserved within the right-hand building.*



*Parsonage Barn stripped down to its skeleton*



*The frame was moved 30 metres to the south west ...*



*... and retained in the structure of the new house.  
The sittingroom today.*



*Bedroom roof*



*Another bedroom*



*Masons' marks*

### ***Upper Parsonage Barn***

The other probable tithe barn in Oxenbourne stood alone at the top of the open fields and was built in c1700. It was strategically placed so that tenant farmers could deliver their tithes to be stored and threshed. It was restored in 2000 – 2002 by its present owners Sue and Nick Atkinson, to serve initially as a tea room and events venue, and the timber framework is complete.



*Fig 52. The original barn before restoration*



*Fig 53 View from the south east during restoration*



*Figs 54 & 5 Restoration in progress , 2000 – 2002*

## Farm Buildings in East Meon, June 20<sup>th</sup> 2019



*Upper Parsonage barn north side, with hipped end.*



*Interior of Upper Parsonage barn*



*Structure of roof, braces and struts*



### **Appendix 3 Recollections by the Jones family of Hill Hampton**

For most of the 20<sup>th</sup> century, Hill Hampton Farm was owned by three generations of the Jones family, and operated as a dairy farm. George Edward Jones bought it in 1918, having previously managed a cheese-making farm in Exton. His son Stanley Eli Jones took over Hill Hampton in 1939 and his record is transcribed below; he noted that ‘we have a Fresian milking herd, and some Longhorn beef cattle (one of the oldest breeds of English cattle)’<sup>1</sup>. There follow recollections his son Richard, recorded in 2017.

#### **Memoir of Stanley Eli Jones**

My father, George Edward Jones, moved from his home at Wedmore, near Cheddar in Somerset, to work for Mr Albert Broadway at Upper Peake Farm, Exton. This was about 1899.

The landlord of that farm was Col. W. Woods of Warnford Park. It was the cattle, as distinct from the land, that were rented to Mr Broadway, and one of the terms of the contract was that cheese-making was to be the prime objective. Practically all the land was permanent pasture, the only exception being a limited amount of arable which grew mangolds for winter feed

I believe my father went there to learn or gain experience in cheese-making, but I know he lived in the farm house and, winning the confidence of Mr Broadway, was soon given responsibility. A lot of the cheese was taken to Winchester, and my father sometimes drove a farm waggon or cheese there.

Within a few years, my father moved to East Meon, where he entered the employment of Mr Darvill of Court Farm (now the Court House). My father lived at this time at

Farm Buildings in East Meon, June 20<sup>th</sup> 2019

the thatched cottage adjoining the Court House, and continued to be engaged in cheese-making.

Some years before my father moved from Somerset to Hampshire, the Pitman family had move from Wincanton to Manor farm, Exton, which also belonged to Col. Woods, and was also let to the Pitmans on the same basis as Peake Farm – i.e. it was the cattle that were rente and cheese had to be made.

In 1905 my father married Edith Ruth Pitman, and took a tenancy of Garden Hill Farm, the tenancy agreement being in the joint names of himself and father-in-law. This was a general farm of 179 acres – not just a cheese-making concern.

I was born at Garden Hill farm in 1906, and in due course there were four sisters and a brother.

About 1909, Upper Peake Farm was given up by Albert Broadway and my father stepped into his shoes – i.e. renting the cattle for cheese-making. He and our family remained there until about 1922, when we move to Hillhampton Farm, which my father had bought a few years before<sup>1</sup>.

I remember one particular incident that occurred about 1919, when we were still living at Exton, but my father already owned Hillhampton Farm.

My father wanted some heifers driven from Hillhampton Farm to Merriefield Farm, Tisted. So he drove me and another boy who was employed and lived in at Peake Farm, Fred Gibbs, to Hillhampton Farm in a pony and trap. Telling us to drive the heifers to Tisted, he added that he did not know how we would get back to Exton, but thought we would have to walk. At that time I was only 13 and Fred was 14.

We duly drove the cattle to their destination, about 8 miles, and then set out to walk to Exton, roughly the same distance. It was a hot summer day and after a time, both feeling thirsty, we called at a pub, the Wheatsheaf at Privett (which no longer exists).

The landlord looked us up and down, since we were only children, and asked us what we wanted. Fred spoke up, and ordered a pint of bitter, whilst I asked for a pint of ginger beer.

The accommodating landlord served us, whereupon Fred bought a clay pipe, and ounce of tobacco and a box of matches. We then resumed our trek back to Exton, during which Fred used most of the box of matches keeping his pipe alight.

In those days, Hillhampton was, as it still is, a general mixed farm of about 120 acres. My father bought the adjoining Rookham Farm at about the same time, and in about 1926 he bought another adjoining farm, Lower House Farm.

In 1938 I married Sylvia Gordon, daughter of Mr. Gordon of Church Farm, East Meon. My father then leased Hillhampton Farm to me. My father continued farming with my brother at Lower House Farm and Rookham Farm, until my father's death about 1955/56. Then Lower House Farm passed to my brother Jack, and, and

## Farm Buildings in East Meon, June 20<sup>th</sup> 2019

Rookham Farm to my sister Bertha. Bertha was a spinster, and so Jack worked both farms, plus some other land at Warnford.

At present, Hillhampton Farm comprises about 150 acres (owned, not rented) and I and my three sons farm a further 300 acres of rented land nearby.

We have a Fresian milking herd, and some Longhorn beef cattle (one of the oldest breeds of English cattle).

We keep about 300 breeding ewes, Welsh half-breeds, and a small lot of Hampshire Downs, which are naturally ‘hurdle sheep’ – i.e. sheep to be folded on root or other crops.

In my boyhood, farming was normally carried out on a 3-year rotation; 2/3<sup>rd</sup> corn and 1/3<sup>rd</sup> either sheep or fallow. Plus permanent pasture.

I can remember when I was living at Lower House Farm in my youth hearing local families go past at about 4.30 a.m. heading for the Weston hopfields at picking time.

My sons and I have an extensive collection of old farm implements which we have accumulated over the years.

### **Richard Jones on Hill Hampton**

*Interview conducted on January 18<sup>th</sup> 2017*



Dad took over Hill Hampton when he got married in 1938, a herd of 43 cows, plus young stock, payment for all his years of working with his father; he never actually got paid a wage from the time he left school at 13 to when he got married at 32; he got a herd of cows given to him when he started his own business.

43 cows sounds an odd number especially in today’s world where herds are two, three, four hundred and you leap about in tens and thirties, but we could actually only tie up 43 cows in the buildings, so that limited the size of your herd in those days. Dad continued farming like that, basically, until my eldest brother Gordon left school at 16 and Dad then went back to a much more mixed farm and he bought some sheep and some pigs; he’d always kept laying hens and done Christmas poultry since my grandfather’s day back in the early 1900s, 1920s. That continued with the standard 43 cows until we put in the milking parlour; instead of having the cows tied up during the winter they were loose-housed in the barn and they went through a milking parlour which was four-unit parlour, and then we were able to balance the cows according to what young heifers and so on we had coming through: I think I was 18, about 1964/65 we put the milking parlour in. It was when the first bulk milk scheme came in; instead of having milk churns for sending the milk away a tank came round with a temperature-controlled tank, which is what we have nowadays. They did come

every day to pick up the milk at that time whereas these days the big tanks hold two or even three day's milk supply and the tankers only come every second or third day to collect the milk.

Dad had rented Tipten Green farm at Clanfield and Lower Barn Farm, his Dad had farmed Lower Barn Farm and he farmed Tipten Green, and that was arable land, basically he grew spring barley there, and ran his heiffers. Of course he had bull calves from the dairy, they were always taken away to big stores to be sold for someone else to fatten, or we fattened them ourselves, depending on food supplies and so on ... At Hill Hampton Dad always grew about 8 acres of winter fodder for the cows, he was very good at growing roots and kale &c.; he actually won the local farmers' cup for the most points for crops grown in one year, which is quite an achievement for a 150-acre farm against the people who had 1,000 acres and more. He had an incredible system: he grew an acre of what was called white horse-tooth maize, and I've never been able to discover what that was, and he fed that green crop from the first of September until it ran out, and he cut it by hand and he put it into bundles and put in front of the cows in the cow pens; it was quite cleverly done in that so many of the plants were laid one way, and so many the other way, and then tied together, and that bundle was thrown in front of the cows so that each cow, left and right, had a top end and a bottom end to chew on. When the maize had run out we then went on to kale and mangles and Dad also grew some swedes which would have been for any stock, sheep, or even human consumption, and he also grew an acre or two of potatoes as did nearly every farm in the valley in those days. (In the field called Hopfield at Hill Hampton, you could find the occasional hop growing in the hedgerow, but that must have been many many years prior to my family being involved in the farm. Hops were grown at Buriton, quite heavily, right up until the '70s ...)

When we had all finished school, the three brothers, David, Gordon and myself, we all went to college at Sparsholt, and Gordon and I won the challenge cup for the animal husbandry student, and my younger brother David won the poultry cup for the best poultry student so we were quite successful at Hill Hampton which proves that Dad was a pretty good trainer in livestock management. Once all of us were back home again, we started to try and expand the farm, and being youthful we wanted to change everything; my brother David was keenest on the dairy herd and we registered them all for bringing up to pedigree status and we ended up in the end with a herd of 150 cows all of them pedigree, we used to rear 30 or 40 heiffers every year and at one time and at one time we were sending those over to the continent as down-calving heiffers; there was quite a trade of quality Friesians going over to Europe; nowadays it's coming back the other way – we were quite successful at that. I have always been very interested in breeds of animals, and we introduced the longhorns into the business in the 1970s, 71, we bought two heiffers, one of which never produced a calf and the other one was the great, great grand dam of every single cow that I had when I had a herd of them here at Hyden Farm. She had a huge influence on the herd, and one of her sons stood in the AI scheme for the Longhorn Society, so I used to buy so I used to buy a son or grandson of his when I needed another bull.

We also kept a flock of Hampshire Down sheep. We bought five very old pedigree Hampshire Downs from the top breeder in the country, they were all in lamb; beginner's luck, the five old ewes had five ewe lambs when they gave birth and that

was the foundation of our flock and we built that up to 50 or 60 Hampshires, and we used to sell rams locally . We did that until the continental breeds took over in popularity and I stopped the pedigree status and just kept them for meat production.

Pigs, we've kept Oxford Sandy & Blacks, a very rare breed, and we've kept them since the 1970s , and I have been keeping Dorking chickens since those days. When the Romans came to Britain, they sent reports as all invading armies do about the newly-conquered land and in one of the reports said that there was a particularly good type of chicken they had found, and that it was very unusual in that it had five toes instead of four, which is what the Dorking has, so the Dorking bloodline was here in Roman times. And we always did Christmas poultry, geese, ducks, turkeys of course. The chicken were always free-range, out in the fields, we had a compound for the turkeys and they were free-range at that time, and they used to back in at night into a high-fenced open-topped pen. Turkeys, once they're fully feathered and strong, they're quite safe in all weathers. We always used to do 20 or 30 geese, and since I've been up at Hyden, I think the biggest number here has been 250 at Christmas.

When I was a little boy we always had three horses, only one of them was working when I was there. There was Phyllis, who was an old mare, who had damaged her leg and we had to have a special shoe made for her, one of which I've still got, and then there was Captain, he was a young castrated male, gelding, he was never actually broken properly, because the tractor side of the business had taken over, before he came into full work, and Darkie, another mare that we had, and she still worked; we used her for feeding the cattle, bringing the fodder in from the field, during the winter months, kale and so on. The advantage of horses, when you're working on your own, a horse will stand at a gate whilst you go and open it, and will then walk through the gate on its own, and stop the other side so that you could close the gate and then continue with your work whereas with a tractor you have to get on and off, on and off all the time. Darkie was an incredibly good horse for hoeing mangles and swedes and that sort of thing; she could walk a straight line very very accurately without damaging the plants and Dad used to like her particularly for that job. She died eventually of old age and that was the end of horses. I moved to Hyden in 1984/5 and Hill Hampton was sold then.

#### **Appendix 4 Garston Barn Correspondence**

*between Jane Brown, George Bartlett, Edward Roberts, Robert Mocatta and Michael Blakstad on the question whether was a tithe barn.*

26<sup>th</sup> October 2018 Jane Brown to Michael Blakstad

Do you happen to have any info on the tithe barn that was in what is now our garden?

26<sup>th</sup> October Michael Blakstad to Jane Brown

Didn't know there was one! It's a slightly odd place to find a tithe barn, so close to the Court House (where the Bishop would have had two barns, one for the rectorial, or greater tithes, the other for the produce harvested directly by the manor). I guess, considering the proximity of the Glebe Strip, it might have been for the vicarial, or lesser, tithes.

## Farm Buildings in East Meon, June 20<sup>th</sup> 2019

26<sup>th</sup> October Jane Brown to Michael Blakstad

I have a picture of it and it was here before the house. I think it was a tithe barn and was still part of the Court House and farm when it was sold in the late 19th century and I know the Bartletts have a copy of the sale particulars. As I understand it, it was dismantled in the 1970s.



29<sup>th</sup> October Michael Blakstad to Edward Roberts

Just to the south west of the village there stood, until the late 20th century, Garston Barn, which was described as a tithe barn. It has since been demolished. I am going on Thursday to examine at the HRO documents which refer to it, from Bonham Carter estate papers in the late 19th century through to sales particulars in 1931 and 1953. Apparently it was part of Court Farm, though I don't know until when. In the first map it is the pink building in the corner of Gassen Field, and the 1870 O/S map has it clearly marked. (The aerial photo shows a modern farm building of some size.)



*Transcript of 1851 Tithe Apportionment map*



*First Ordnance Survey map of East Meon*

Could it have been a rectorial tithe barn, so close to Court Farm itself? (I have always assumed that there was a tithe barn as well as a manorial barn in the curia ... how close together could they be?). Did vicars have tithe barns? It is close to the Glebe Strip. Or might it have been a manorial barn, since it lies amid tithe-free lands which

## Farm Buildings in East Meon, June 20<sup>th</sup> 2019

were presumably farmed in demesne and would have produced a considerable amount of grain?

### 17th November Michael Blakstad to Jane Brown

I am at the HRO, having examined a couple of documents ... not very useful on the 'tithe barn' front, since I can find no reference to the 'tithe' part. Edward Roberts agrees that a large barn on its own might well have been a tithe barn, but the building in the photo was 20th century, and before that we only have maps showing the outlines of buildings ... which do look large!

94M72/B/B168/4 Accompanying sale of Bonham Carter lands, 'Garston Farm & Belmont undated. Garston Barn, shown in map (undated, but a bundle of papers from 1870 - 1890)

51M91/9 1931 Sale of 'first rate dairy & stock farm' ... Garston Farm, extending to about 330 Acres ... A very fine range of model farm buildings (erected 10 years ago regardless of cost' .. Cowhouse, for 80 cows, 15 loose boxes, Implement House, Piggeries, Cattle Yard. Another set Cart Horse Stabling, Implement Sheds & 6 model cottages ... This gives us a date (1931 minus 10) for the farm buildings, but there is no mention of the barn.

### 6<sup>th</sup> November George Bartlett to Michael Blakstad

I have looked out the 1880 auction particulars of Court Farm (a photocopy of the document in the county archives). It includes the following: "At Garston Barn: Carter's Cottage, Stabling for six Horses, with Loft over, Cart Shed, Barn, Wood and Fowl Houses." That is all, and no plan. Do have a look, if you would like, but I don't think it will help in establishing whether the barn had been a tithe barn. You may have the schedule that identifies the component parts of Court Farm, but in case you don't, I attach a scanned copy.

1305-7	Great Garston Meadow	Meadow	20	2	35
1304	Garston	Yard and Buildings	0	2	9
1303	Garston Field	Arable	20	0	29
1302	Little Garston Meadow	Meadow	0	3	32

### 8<sup>th</sup> November Michael Blakstad to George Bartlett, Edward Roberts, Jane Brown

Thanks again for this information. I have discussed with Edward the possibility of Garston Barn being a tithe barn. A sale of Garston Farm & Belmont in 1931 also lists: 'Garston Barn, shown in map accompanying sale of Bonham Carter lands, 94M72/B/B168/4. I looked this up at the HRO but didn't copy the plan; it shows what is effectively a farm yard with the cottage, sheds & stabling.

One problem is that there is no photograph or other image of the old barn; in the 1920s, when Garston Farm was built, the barn seems to have been converted into a sizeable cow house ... see the later photograph, below. Michael Atkinson has a clear memory of this building and is also seeing if he has any records. The cow house *may* well have been built on the framework of the old barn, as at Parsonage Barn, in which case it may have been double-aisled; it has evidently lost the side doors. If it does echo the original building it was obviously a very large structure with two aisles which would have been big enough to be a tithe barn.

## Farm Buildings in East Meon, June 20<sup>th</sup> 2019

As I understand it, tithe barns went through two periods: pre-Reformation and Civil War they were owned by the Diocese and received the rectorial tithes. After the Reformation, they belonged to landowners, many of whom bought indentures which allocated the rectorial tithes to them, in which case they became working barns which received and threshed *all* the grain grown on the landowner's fields. Lots of places continued to be known as tithe barns when that function was a distant memory.

If we are correct in identifying Parsonage and Upper Parsonage barns as Tithe Barns, which we have deduced from their names, these too stood among what had been open fields but Oxenbourne fields were cultivated by tenants, who of course owed tithes to the Diocese. Garston Farm stood amid the tithe-free fields of Court Farm (Farmed in demesne). And it was close to the curia at the Court House, which presumably had both a tithe and a manorial barn. Would there have been a tithe barn sitting amid demesne fields, or would it not have been a manorial barn, storing the grain harvested by serfs on the Court Farm land?

### 8<sup>th</sup> November Edward Roberts to JB, GB

So far as the bishopric pipe rolls pre-1500 are concerned, there were only three tithe barns in the manor of East Meon: one at the Courthouse and the others at Froxfield and Steep. The one at Steep still survives as a fairly small 3-bay structure now converted into a house. So tithe barns did not have to be very big if the expected corn crop was not particularly large.

I am not sure what happened post-1500 but when the bishops were abolished (temporarily as it turned out) by Parliament (in 1646 I think) a survey was made of what was deemed valuable property (including buildings).and that is in the HRO.

### 9<sup>th</sup> November Michael Blakstad to Edward Roberts

I didn't know about the references to only three tithe barns in the manors, which puts my theories about the two Parsonage barns in doubt! I wonder why the Oxenbourne barns are called that, since there was no resident clergyman in the tithing, and although it was called 'Oxenbourne et Ecclesia' in the 1567 survey, no sign of lands being farmed in demesne. (There are also fields in Oxenbourne named Priors &c).

But this does, I think, add to my own doubts about Garston Barn being a rectorial tithe barn ... I had photocopied both the 1567 diocesan and the 1647 parliamentary surveys; I can, at first scan, see no reference to the name "Garston" or any of its versions. The 1647 doesn't have an index of land and property but lists under tenants, so isn't so easy to read. Since we have no building to examine, my guess is that it was a working barn built post-Restoration.

### 9<sup>th</sup> November Edward Roberts to Michael Blakstad & George Bartlett

Could it be that the bishops' rectorial or parsonage estate was at some stage post-1500 leased in separate lots to smaller farmers each of whom needed his own barn on what was still parsonage land; hence parsonage farm/barn? If so, the barn may have been used for storing the farmer's corn tithe corn because the tithe may have been commuted to a money rent?

9<sup>th</sup> November George Bartlett to Michael Blakstad & Edward Roberts

The old open fields of Priesthill (1301-2 *Prustehull'*, 1409-10 *Presthull'*) and Priestlands (1301-2 *Prusteslad'*, 1409-10 *Prestlade*) could well have been land that now forms part of Preston Farm, Parsonage Farm and Upper Parsonage Farm (i.e. to the east of Stonylands): if not, it is hard to see where else they might have been. Why the "Priest" it is difficult to guess at since these were open fields and not part of a priestly possession or occupation. But a transition in name from Priest to Parson - either to distinguish Preston Farm from Parsonage Farm or because Parson came to be more commonly used than Priest - would be understandable.

9<sup>th</sup> November Edward Roberts to Michael Blakstad & George Bartlett

Could it be that the bishops' rectorial or parsonage estate was at some stage post-1500 leased in separate lots to smaller farmers each of whom needed his own barn on what was still parsonage land; hence parsonage farm/barn? If so, the barn may have been used for storing the farmer's corn while he paid cash to the parson/bishop because the tithe may have been commuted to a money rent? In which case it would have been a barn on parsonage land (hence 'Parsonage barn') but not a tithe barn because it no longer stored tithe corn."

10<sup>th</sup> November George Bartlett to Michael Blakstad & Edward Roberts

In the middle ages the amount of space the Bishop required in his tithe barns was considerable - enough for a tenth of the manor's production (other than that from the in-hand land). In later centuries, while the area under cultivation and the level of production would have increased, commutation and appropriation would no doubt have reduced very considerably the amount of space required - while the appropriators would presumably not have needed any dedicated space for their entitlements.

November 13<sup>th</sup> Robert Mocatta to Michael Blakstad

Garston Barn was on tithe free land, so not on the tithe map. It is marked as a "cottage, barn buildings & yard" on the map and ownership list for the contemporaneous non-tithe lands, and it is there on the 1870 map. On the (non) tithe map it was occupied by George Lock of Court Farm.

## Appendix 5. Garston Farm Correspondence

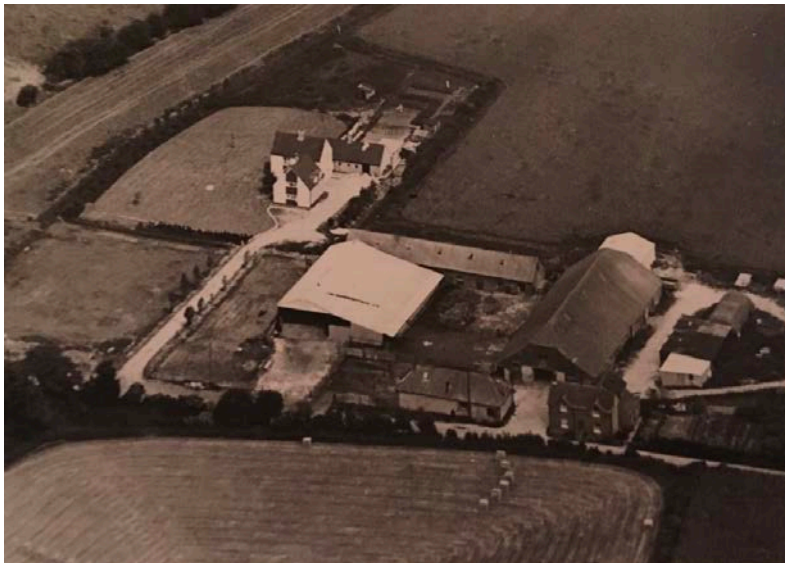
### 1) *Lady Diana Cavendish to Michael Blakstad*

8th April Dear Michael, thank you so much for sending me all that information ...  
Garston Farm, where my brother and sister-in-law lived, the architect was Lionel Esher, my sister-in-law's mother met him in the West Indies and thought he would be a suitable architect, she was rather a snob, and liked the idea of him being a Lord....  
best wishes, Diana  
2019

9th April. Dear Michael, as far as I can work out, Garston Farm was built for my brother Brian and his wife about 1955. After the estate was sold off, my mother had to buy back two farm, one for Brian and the other for his twin brother David. I think it was called Goleigh farm? He never lived there as there wasn't a decent house. My grandmother was a very strange and eccentric person. When she died,

she left no money to her son and daughter, all to found the charitable Trust, which you mention. However, under Scottish law, you cannot disinherit your children, so my uncle and my mother brought a case to prove that she was domiciled in Scotland, which they won, so some of the money did trickle down to them. Perhaps that is why, when you mention that Mr Justice Barnard decreed certain passages of the will should be omitted, it is referring to my mother and uncle being cut out of the will originally. Eleanor, like her father, who I find it very difficult to get my head round that he was my great grandfather, had a pathological dislike of local government. Anyway, thanks for sharing the information, best wishes, Diana

*2) Richard Brown (now living at Garston Farm) to Michael Blakstad*



20<sup>th</sup> April. Dear Michael, ... the new photo shows the site next door to us which was derelict when we moved in in 1992. The building in the bottom left hand corner is the Old Dairy, now the flint cottage next door to us, where Steve and Fran now live (formerly the Selbys). It looked at the time as a dairy should with white tiled walls etc, so I doubt any actual milking took place there, just butter and cream making I should think.

I can confirm that our house, pre its 1970s extension, is the one at the bottom right. It's not clear from the photo but I'm sure the old part is flint underneath rather than brick, as we had to have the front elevation re-rendered and had all the old stripped off.

You can see the old stables which were converted in the 90s to form Mike's Helen's and Anella's cottages. We could see behind the stables and quite possibly predating them the remains of a tram track that had apparently once been used to fetch and carry things from and to the barn at 40 Acres. I think the building had been erected by the Coop, but its last use was for stabling show jumpers when the Greens owned the property.

The barn was demolished at the time of the redevelopment next door. Dave Baker used to keep some orphan sheep and they used to lamb in that barn all observed by our young children sitting up on the straw bales - they became quite knowledgeable!

That barn (as distinct from the older wooden barn in our photo) was just a steel construction with rather patchy corrugated iron - I remember it used to rattle horribly in a gale so we were pleased when it went!

Best wishes

Richard

## Appendix 6 Interview with Charlotte Duthie

*With Andy Hales, concerning Garston Farm*

**Charlotte:** My grandmother, Doris Peel, her daughter, did get two farms from the estate, one of which was Garston, one of which was Glington farm, I think it was called, above Hambledon, between here and Hambledon, we're not sure how she got them off the estate – I think she had to buy them in the end but at quite a good price because, obviously, she was the daughter, but that was in 1954, that she got the two farms, one was Garston, that my father got, and my uncle, his twin brother, got the other farm.

**Andy:** That's Brian Blacker and then David Blacker.

**Charlotte:** Yes, Brian, my father, got Garston Farm which was I think about 360 acres, all the way underneath Hen Wood. The Tosdevines were there when we were there, it came in front of Hen Wood, behind Hen Wood, behind Garston as it is now, up towards Bereleigh and all that bit as far as the eye can see. It was a lovely, lovely farm.



*Brian Blacker photographed in 2016*

**Andy:** What did he grow?

**Charlotte:** It was, it is, lovely beautiful farm land, as you know. It was quite intensively farmed when he took it over, in 1954; he employed 7 men on a basic wage of £4. 15s a week, he had a herd of 70 Ayrshire cows which were milked by hand in the dairy – everyone knows the dairy which was along the road there – lunch was at 12.30; Brian shepherded a flock of sheep, sleeping with the ewes when they were about to give birth; he grew oats, wheat, barley, potatoes, mangolds & sugar beet which was harvested and loaded onto trailers and driven to West Meon station where it was forked into the railway and taken to the nearest beet factory at Tavistock. He also had pigs, well, anyway .. they didn't have anywhere to live – they lived in one of the cottages along ...

**Andy:** Along from Garston ...

**Charlotte:** ... along from Garston, while they got an offset, a fairly modern-looking house by all accounts, where Garston Farm House is now. I think it's called Garston House now, where the Davenports live. They moved into that in 1957 and then they had three children born in Garston House and one had been born in the cottage up the road when they were waiting for the house to be built.



*The new farmhouse built by Brian Blacker*

Then I think the very intensive farming became less intensive. We kept the herd, the cows were milked, I remember, the dairy herd, we had them right up till the end, and I remember the milking by hand but I also remember a new dairy being installed: it was always breaking down. These things were put on the udders but, you know, 'it's not working!'. So a lot of teething problems when they mechanised the milking. And then every day the milk was collected, when we first were there, in large steel churns put on a bench outside, a large bench outside the dairy and they were picked up by ... I don't know who it was: I know. And then I think all that intensive farming was turned into wheat so it became a wheat and barley – wheat and barley were grown mainly – and I remember playing in those fields and light aircraft sprayed rather nasty chemicals as we played ... and they went so close to the ground, we had to almost take cover! So it became mainly wheat and barley and then the dairy herd, and then my father was given another farm by his mother over at Steep Marsh, Coldhayes, so we all moved house when I was ten, so it was in 1967, but my father continued farming Garston as well as the Steep Marsh farm for quite a few years after that until he sold it to, I think, Bill's father, Bill Tyrwhitt Drake's father, Bereleigh Estate.

## End notes

- <sup>i</sup> Kerridge, Eric, *The Agricultural Revolution* Allen & Unwin 1967 pp42 - 52
- <sup>ii</sup> Wesley, Betty, *Farming in the East Meon Hundred* available as a PDF at <http://www.eastmeonhistory.net/farming-in-the-valley-project/reasearch/roman-farming/>
- <sup>iii</sup> Wesley, Ian *Anglo-Saxon Farming in East Meon Hundred* available as a PDF at <http://www.eastmeonhistory.net/farming-in-the-valley-project/reasearch/anglo-saxon-farming/>
- <sup>iv</sup> The model was devised by historians Elizabeth Lewis, of Hampshire Museums Service, and Edward Roberts, lecturer in mediaeval architecture at King Alfred's College.
- <sup>v</sup> A fuller account of the cultivation of Open Fields is provided in a study of East Meon in the Middle Ages, available as a PDF at <http://www.eastmeonhistory.net/farming-in-the-valley-project/reasearch/medieval-farming/>
- <sup>vi</sup> Miller, Edward. Gen Ed Joan Thirsk, *Agrarian History of England and Wales, Vol III 1348 – 1500* Cambridge University Press p286
- <sup>vii</sup> Lacey & Danziger, *Ibid* p133
- <sup>viii</sup> Lacey, Robert & Danziger, Danny *The Year 1000*. Abacus History 1999 p11
- <sup>ix</sup> Lake, Jeremy *Historic Farm Buildings* Blandford 1989 p27
- <sup>x</sup> Miller, *Ibid* p292
- <sup>xi</sup> A PDF will be available at [www.eastmeonhistory.net](http://www.eastmeonhistory.net)
- <sup>xii</sup> Lacey & Danziger, *Ibid*. p133
- <sup>xiii</sup> Lake, Jeremy *Historic Farm Buildings* Blandford 1989 p74
- <sup>xiv</sup> Parker, Rowland *The Common Stream* Holt Rinehart and Winston, New York 1975 p154
- <sup>xv</sup> Roberts, Edward *Medieval Hall Houses of the Winchester Area* winchester City Museums p30
- <sup>xvi</sup> Roberts, Edward *Hampshire Houses 1250 – 1700* Hampshire County Council,
- <sup>xvii</sup> Tiller, Kate *English Local History, an Introduction* Sutton, 2002 p46
- <sup>xviii</sup> Wrightson, Keith *Earthly Necessities* Yale 2000 p184
- <sup>xix</sup> Wrightson, Keith *Ibid* p233
- <sup>xx</sup> Tinniswood, Adrian *Life in the English Country Cottage* Weidenfeld & Nicholson, 1995 p46
- <sup>xxi</sup> <http://www.eastmeonhistory.net/wars/the-civil-war-in-east-meon/>
- <sup>xxii</sup> HRO 11M59/A1/2/12 (1647) The manor is described as 'late in the possession of Dr Walter Curle (the deposed Bishop of Winchester), and now by ordinance of Parliament settled upon trustees for the use of the Common Wealth
- <sup>xxiii</sup> British History Online, <http://www.british-history.ac.uk/cal-treasury-books/voll/specific> pp270-281 *Forfeit of lease from Francis Allen and Lease to Stephen Fox*. Entry Book: November; Calendar of Treasury Books, Volume 1, 1660-1667, ed. William A Shaw (London: His Majesty's Stationery Office, 1904), 270-281. HRO M49/T50 1661 *Copy of letter patent granted to Stephen Fox for faithful service to Charles II, Court Farm, part of the manor of East Meon.*

- xxiii HRO [8M49/T51](#) *Bargain and sale of South Farm, part of the manor of East Meon 1662 (i) Stephen Fox of Middx, esq. (ii) William Hearst of London, doctor. [M49/T50](#) 1661 11M59/D1/2 11M59/D1/2 pages 154/5 1661, 11M59/B2/17/pp 169*
- xxiv Blakstad, *Tithing of Oxenbourne, 2017*, PDF available at <http://www.eastmeonhistory.net/farming-in-the-valley-project/reasearch/oxenbourne-tithing/>
- xxvi HRO *East Meon Rental 1567* 11M59/A1/3/6.
- xxvii <http://www.eastmeonhistory.net/farming-in-the-valley-project/reasearch/magdalen-college/>
- xxviii Roberts, Edward *The Bishop of Winchester's Fishponds in Hampshire 1150 – 1400: their development, function and management*. Hampshire Field Club Archeaol. Soc 42 1986 p125
- xxix Thirsk, Joan *Agrarian History Vol III* Cambridge University Press p866
- xxx Lake, *Ibid* p21
- xxxi Thirsk *ibid*
- xxxii *Historic Farm Buildings in Hampshire* HCC p8
- xxxiii Kerridge, Eric *The Agricultural Revolution* George Allen and Unwin 1967 P49
- xxxiv Lake *Ibid* p29
- xxxiv Markham, Gervase *Cheap and good husbandry'* 1614
- xxxiv Lake, *Ibid* p25
- xxxiv Appendix 2. *Memoir of Stanley Eli Jones of Hill Hampton Farm, Oxenbourne, East Meon*
- xxxiv Appendix 2 Jones, Richard *Transcript of Interview conducted on Jan 18<sup>th</sup> 2017*
- xxxv Lake, *Ibid* p25
- xxxvi Kerridge, Eric *Ibid* p50
- xxxvii Cobbett *Ibid*, p76
- xxxviii Kerridge, Eric *Ibid* p35
- xxxix Markham, Gervase *Cheap and good husbandry'* 1614
- xl Kerridge, Eric *Ibid* p34
- xli Lake, *Ibid*, p86
- xlii Peters J.F.C. *Discovering traditional farm buildings* Shire Classics p5
- xliii Lake *Ibid*
- xliv Hampshire Record Office PROB11/1023 *Will of the Rev Edward Bentham, Doctor of Divinity Prerogative Court of Canterbury 11776*
- xlv Crane, Nicholas *The making of the British Landscape* Weidenfeld & Nicholson 2016 p452
- xlvi Kent, David. *Popular Radicalism and the Swing Riots in Central Hampshire* Hampshire Papers 11 1997
- xlvi David Hey, ed. *Oxford Companion to Family and Local History* Oxford 2008 p187
- xlvi Hoskins, W.G *ibid* p189 18
- xlvi Blakstad, *Tithing of Oxenbourne* op cit p10
- <sup>1</sup> Eveleigh David J. *Ibid* p18
- li ; There is no documentary evidence of a farm earlier than that, although there were probably farm buildings and dwellings for labourers serving Hilhampton.
- lii Eveleigh David J. *Ibid* p30
- liii Standfield, F.G. *A History of East Meon*. Phillimore 1994 p76

<sup>liv</sup> More information about Lythe House and its occupants is available as a PDF at [www.eastmeonhistory.net](http://www.eastmeonhistory.net)

<sup>lv</sup> An account of the battle can be found at <http://www.eastmeonhistory.net/battle-of-vierstraat-ridge/>

<sup>lvi</sup> Tinniswood *Ibid* p199

<sup>lvii</sup> Appendix 4, p52, for the correspondence on this subject.

<sup>lviii</sup> Appendix 5, Interview with Charlotte Duthie, p 56.